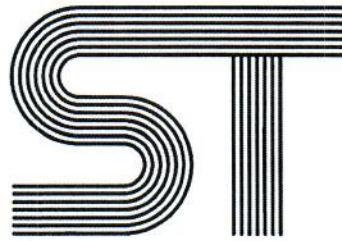


STIRLING TUITION
SEAG
Entrance Assessment



STIRLING TUITION
WWW.STIRLINGTUITION.COM

Practice Paper 15

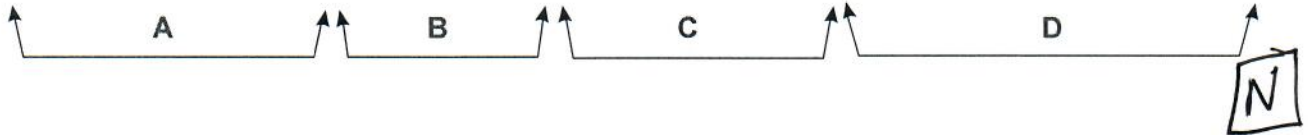
(Cut Answer Sheet from Back Page)

English – Practice Test

In this question there is either **one** punctuation mistake or **no** punctuation mistake. Find the group of words with the mistake in it and mark its letter on your answer sheet. **If there is no mistake, mark N.**

P1

The whole family – six adults and four children – lived in a house at the end of the road.



In this question you have to choose the **best** word to complete the sentence, so that it makes sense and is written in correct English. Choose the **best** answer and mark its letter on your answer sheet.

P2

Will you please sit still! You are wriggling around as if you have ants in your

- shoes socks trousers pants hair .
- A B C D E

In this question there is either **one** spelling mistake or **no** spelling mistake. Find the group of words with the mistake in it and mark its letter on your answer sheet. **If there is no mistake, mark N.**

P3

Queen Elizabeth II reigned as monarch for seventy years, two hundred and fourteen days.



Read this passage to yourself.

Extract from The Story of Urashima Taro, The Fisher Lad (from Japanese Fairy Tales, compiled by Yei Theodora Ozaki)

Keeping the light before his eyes he dragged his weary, ^(P5)aching feet as quickly as he could towards the spot, and soon came to a miserable-looking little cottage. As he drew near he saw that it was in a tumble-down condition, ^(P4) the bamboo fence was broken and weeds and grass pushed their way through the gaps. The paper screens which serve as windows and doors in Japan were full of holes, and the posts of the house were bent with age and seemed scarcely able to support the old, thatched roof.

Answer this question. Choose **one** answer from the options below and mark its letter on your answer sheet.

P4

Which of the following is true about the cottage?

- A It is made of bamboo.
- B It is made of paper screens.
- C It looks like it is going to fall down.
- D It has a large garden.
- E There are holes in the roof.

For this question, you have to write your answer in the box provided on your answer sheet (box P5).

P5

Which word from the passage means the same as "tired"?

Weary



Maths – Practice Test

P6

$$\frac{5}{6} \text{ of } 60 = \underline{50 \text{ mins}}$$

A student spent five sixths of an hour doing their English homework. Then they spent 40 minutes doing their maths homework. Finally, they spend three tenths of an hour doing their science homework.

$$\frac{3}{10} \text{ of } 60 = 18 \text{ mins}$$

How many hours and minutes did they spend altogether doing their homework?

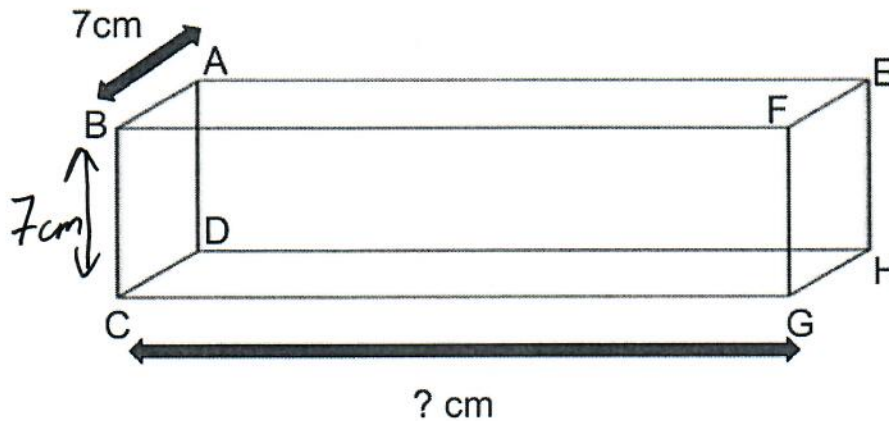
$$\begin{array}{r} 1'08 \\ - 60 \\ \hline 1 \text{ hr } 48 \text{ mins} \end{array}$$

$$\begin{array}{r} 50 \\ 40 \\ + 18 \\ \hline 108 \end{array}$$

- A 1hr48mins B 1hr 46mins C 1hr 15mins D 1hr 39mins E 1hr 24mins

P7

Look at the cuboid below.



ABCD is a square. Each side of the square is 7cm. The volume of the cuboid is 490cm^3 .

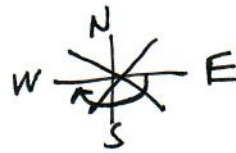
$$\begin{array}{r} 10 \\ 7 \overline{) 70} \\ \hline 7 \\ 7 \overline{) 490} \end{array}$$

What is the length of the line CG?

- A 9 **B 10** C 7 D 11 E 8

P8

I am facing East.



Through how many degrees must I turn anticlockwise to face West?

A 270°

B 90°

C 225°

D 360°

E 180°

For these questions you have to **write your answers** in the boxes provided on your answer sheet (box P9 and P10). The units of measurement have been given.

P9

Boxes A, B and C contain chocolates. There are 3 types of chocolate: dark, milk and white. The number of chocolates in each box is:

Box A	Box B	Box C
6 Dark	12 Dark	20 Dark
8 Milk	10 Milk	13 Milk
6 White	8 White	7 White

$$A = \frac{6}{20} = \frac{3}{10}$$

$$B = \frac{12}{30} = \frac{4}{10}$$

$$C = \frac{20}{40} = \frac{5}{10}$$

I choose a chocolate at random from each box.

From which box (A, B or C) am I most likely to choose a dark chocolate?

C

P10

A pupil thinks of 2 consecutive numbers. When they add the numbers they get 31. When they multiply the numbers they get 240.

$$14 + 15 = 29$$

$$15 + 16 = 31 \checkmark$$

What are the two numbers the pupil is thinking of?

15 and 16

$$\begin{array}{r} 15 \\ \times 16 \\ \hline 90 \\ 150 \\ \hline 240 \end{array}$$



English – Main Test

In this exercise there are some mistakes with **punctuation** or use of **capital letters**. On each numbered line there is either **one** mistake or **no** mistake. Find the group of words with the mistake in it and **mark its letter on your answer sheet**. If there is no mistake, mark **N**.

Punctuation Exercise

1 I didn't ask for your help so please go away and leave me alone!



2 This year, the first prize in the school raffle is a massive box of Cadbury's chocolates.



3 "Why were you absent from school yesterday," the teacher asked. "Do you have a note?"



4 Max packed a towel, sun cream, a picnic, and his swimming trunks for his trip to the beach.



5 I lost my new phone (a birthday present from my parents) at football practise last weekend.



In this exercise you have to choose the **best** word, or **group of words**, to complete each numbered line so that the passage makes sense and is written in correct English. Choose the best answer and **mark its letter on your answer sheet**.

Grammar Exercise

6

My teacher knows everything. It's like she has

ears sight glasses an eye eyes in the back of her head.
A B C D E

7

He is such a show off. He is always going

in on along around into about how much money he has.
A B C D E

8

"That is not your coat!" she said angrily. "It is

mine yours my him her."
A B C D E

9

It was hard to hear with everyone

shout shouted shouting shouts to shout at once.
A B C D E

10

I really liked the film and or then however so ,

A B C D E

I still prefer the book.

In this exercise there are some **spelling** mistakes. On each numbered line there is either **one** mistake or **no** mistake. Find the group of words with the mistake in it and **mark its letter on your answer sheet**. If there is no mistake, mark **N**.

Spelling Exercise

11 As part of her morning routine, she likes to go swimming at the leisure centre.

↑ A ↑↑ B ↑↑ C ↑↑ D ↑

N

12 It was a wild and stormy night. The rain lashed against the window and the wind groaned.

↑ A ↑↑ B ↑↑ C ↑↑ **D** ↑

13 I was able to get potatoes at the supermarket but they didn't have any tomatoes.

↑ A ↑↑ B ↑↑ C ↑↑ **D** ↑

14 In order to lose weight, he stopped eating snacks and began to exercise every day.

↑ **A** ↑↑ B ↑↑ C ↑↑ D ↑

15 The mechanic said that he could fix the car but it would be very expensive.

↑ **A** ↑↑ B ↑↑ C ↑↑ D ↑

Read the **whole** passage carefully, then answer the questions that follow.

Extract from The Story of Urashima Taro, The Fisher Lad (from Japanese Fairy Tales, compiled by Yei Theodora Ozaki)

1. Long, long ago in the province of Tango there lived on the shore of Japan in the little
2. fishing village ⁽¹⁶⁾ of Mizu-no-ye a young fisherman named Urashima Taro. His father had
3. been a fisherman before him, and his skill had more than doubly descended to his son, for
4. Urashima was the most skilful fisher ⁽²⁵⁾ in all that country side, and could catch more Bonito
5. and Tai in a day than his comrades could in a week. ⁽¹⁸⁾

6. But in the little fishing village, more than for being a clever fisher of the sea was he ⁽²⁸⁾
7. known for his kind heart. ⁽¹⁹⁾ In his whole life he had never hurt anything, either great or
8. small, and when a boy, his companions had always laughed at him ⁽²⁸⁾ for he would never
9. join with them in teasing animals, but always tried to keep them from this cruel sport. ⁽²³⁾

10. One soft summer twilight ⁽¹⁷⁾ he was going home at the end of a day's fishing when he came
11. upon a group of children. ⁽²⁹⁾ They were all screaming and talking at the tops of their voices,
12. and seemed to be in a state of great excitement about something, and on his going up to
13. them to see what was the matter he saw that they were tormenting a tortoise. First one
14. boy pulled it this way, then another boy pulled it that way, while a third child beat it with
15. a stick, and the fourth hammered its shell with a stone. ⁽²⁴⁾ ⁽²⁸⁾

16. Now Urashima felt very sorry for the poor tortoise and made up his mind to rescue it. He
17. spoke to the boys:

18. "Look here, boys, you are treating that poor tortoise so badly that it will soon die!"

19. The boys, who were all of an age when children seem to delight in being cruel to animals,
20. took no notice of Urashima's gentle reproof, but went on teasing it as before. One of the
21. older boys answered:

22. "Who cares whether it lives or dies? We do not. Here, boys, go on, go on!" ⁽²⁰⁾

23. And they began to treat ⁽²⁷⁾ the poor tortoise more cruelly than ever. Urashima waited a
24. moment, turning over in his mind what would be the best way to deal with the boys. He ⁽²⁰⁾
25. would try to persuade them to give the tortoise up to him, so he smiled at them and said:
26. "I am sure you are all good, kind boys! Now won't you give me the tortoise? I should like
27. to have it so much!"

28. "No, we won't give you the tortoise," said one of the boys. "Why should we? We caught
29. it ourselves."

30. "What you say is true," said Urashima, "but I do not ask you to give it to me for nothing.
31. I will give you some money for it. Won't that do for you, my boys?" He held up the
32. money to them, strung on a piece of string through a hole in the centre of each coin.

33. "Look, boys, you can buy anything you like with this money. You can do much more
34. with this money than you can with that poor tortoise. See what good boys you are to
35. listen to me."

36. The boys were not bad boys at all, they were only mischievous, and as Urashima spoke
37. they were won by his kind smile and gentle words and began "to be of his spirit," as they
38. say in Japan. Gradually they all came up to him, the ringleader of the little band holding
39. out the tortoise to him.

40. "Very well, we will give you the tortoise if you will give us the money!" And Urashima
41. took the tortoise and gave the money to the boys, who, calling to each other, scampered
42. away and were soon out of sight.

43. Then Urashima stroked the tortoise's back, saying as he did so:

44. "Oh, you poor thing! Poor thing!—there, there! you are safe now! They say that a stork
45. lives for a thousand years, but the tortoise for ten thousand years. You have the longest
46. life of any creature in this world, and you were in great danger of having that precious life
47. cut short by those cruel boys."

Please answer these questions. (Look at the passage again if you need to.) You should choose the **best** answer and mark its letter on your answer sheet.

16

Where does the story take place?

- A in a large town
- B in a fishing village
- C in the sea
- D on a fishing boat
- E in the countryside

17

When does the action in the story take place?

- A early in the morning
- B midnight
- C sunrise
- D twilight
- E midday

18

Look at lines 1 – 5. Based on what you have read in this paragraph, who or what are “Bonito” and “Tai”? (line 4)

- A Urashima’s parents
- B Urashima’s friends
- C Urashima’s pets
- D Types of fish
- E Types of birds

19

Look at lines 6 – 9. What is Urashima most well-known for in the village?

- A Being the best fisher in the village.
- B Being the funniest person in the village.
- C Being the smallest person in the village.
- D Being the most cruel person in the village.
- E Being the kindest person in the village.

20

“Urashima waited a moment” (line 23 - 24) Based on what you have read in this paragraph, why does Urashima wait?

- A He is thinking about what to do.
- B He is confused.
- C He is stupid.
- D He is scared of the boys.
- E He is angry with the boys.

21

Look at lines 30 – 35. Why does Urashima offer the boys money?

- A He is very rich and has lots of money.
- B The boys love money more than anything.
- C The boys can buy many things with the money.
- D The tortoise is very valuable.
- E He feels sorry for the boys.

22

Look at lines 36 – 39. What does the phrase, “to be of his spirit,” mean (line 37)?

- A The boys think that Urashima is a ghost.
- B The boys think that Urashima is funny.
- C The boys are hypnotised by Urashima.
- D The boys begin to feel kind like Urashima.
- E The boys are related to Urashima.

For these questions you have to **write your answers**, neatly, in the boxes provided on your answer sheet.

23

Why did Urashima’s companions always laugh at him?

Won't tease animals

24

How many children were tormenting the tortoise?

4

25

Which word in line 4 means the same as "talented"?

Skilful

26

Which word in line 32 means the same as "middle"?

Centre

27

Which part of speech is "treat" as it appears in the passage? (line 23)

Verb

28

Which one part of speech are the following as they appear in the passage?

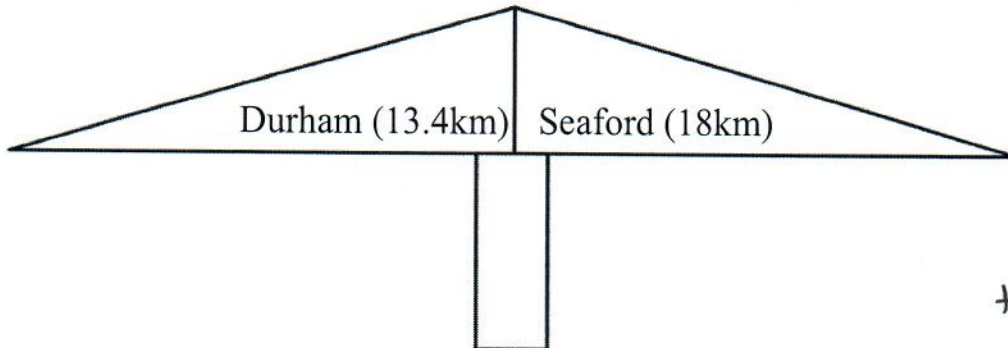
he (line 6) him (line 8) they (line 11) it (line 14)

Pronouns

Maths – Main Test

29

Two small towns, called Durham and Seaford, are connected by a long straight road. The signpost below is located on the road between the towns.



$$\begin{array}{r} 13.4 \\ + 18.0 \\ \hline 31.4 \end{array}$$

What is the distance between the two towns in kilometers?

A 13.4

B 31.4

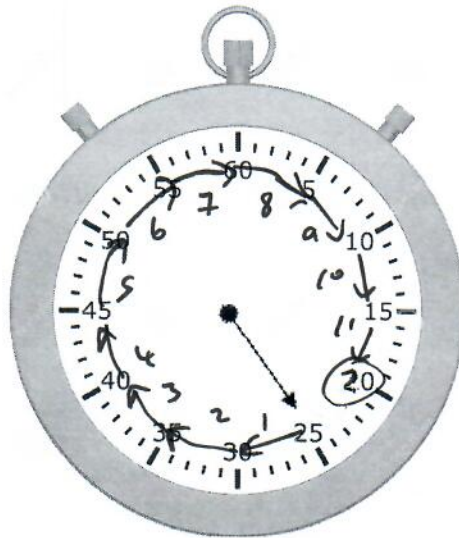
C 11.6

D 14.2

E 4.6

30

Look at the stopwatch below.



$$30 \overline{) 330}$$



The hand on the stopwatch is pointing at 25. The hand now moves clockwise through 330° .

What number will the hand be pointing to after turning clockwise through 330° ?

A 10

B 15

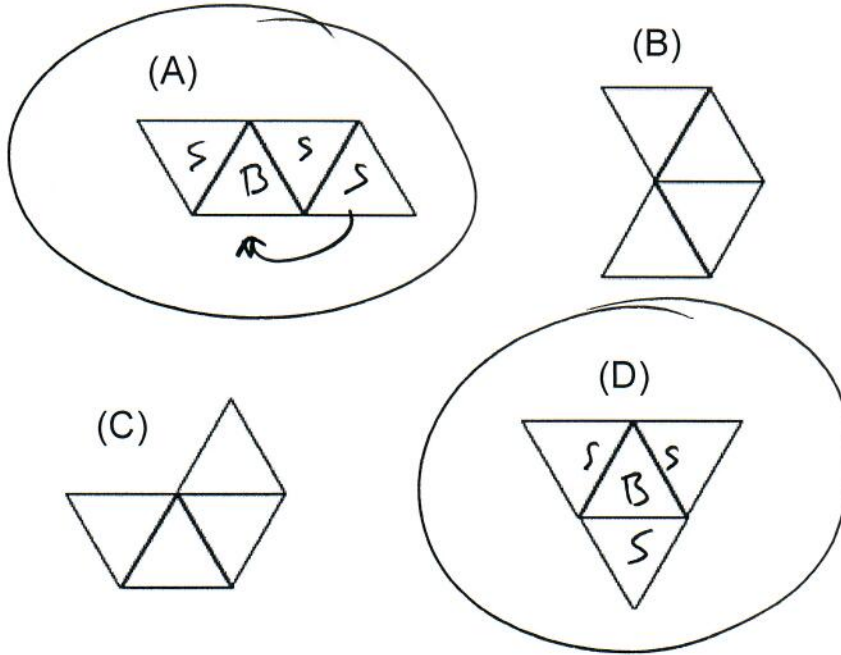
C 20

D 25

E 30

31

Look at the 3D nets below.



Which two nets above would fold to make a triangular based pyramid?

A A,C

B B,C

C C,D

D B,D

E A,D

32

A film lasts for 117 minutes. It finishes at 18:24.

At what did the film start?

A 18:17

B 17:07

C 16:27

D 20:21

E 19:41

$$\begin{array}{r} 117 \\ - 60 \\ \hline 1 \text{ hr } 57 \text{ mins} \end{array}$$

$$\begin{array}{r} 7 \quad 7 \\ 18:24 \\ - 1:57 \\ \hline 16:27 \end{array}$$

33

Toby goes to the shop to buy a new rugby shirt for £43. When he goes to pay the sales assistant tells him there is an 80% reduction in the price.

$$100 - 80 = 20\% = \frac{2}{10} \text{ of } 43$$

How much does Toby actually pay for the rugby shirt?

$$\begin{array}{r} 4.30 \\ \times 2 \\ \hline 8.60 \end{array}$$

- A £8.60
 B £35.00
 C £34.40
 D £18.40
 E £41.80

34

Look at the fractions below.

$$\frac{21}{\boxed{24}} = \frac{7}{8}$$

(An arrow labeled $\times 3$ points from 7 to 21, and another arrow labeled $\times 3$ points from 8 to the box containing 24.)

What number needs to be inserted in the box above to make this correct?

- A 8 B 16 C 24 D 32 E 40

35

How many $\frac{1}{4}$ litre glasses can be filled from a container which holds 13.5 litres of water?

$$\begin{array}{r} 13.5 \\ \times 4 \\ \hline 54.0 \end{array}$$

- A 3 B 54 C 4 D 13 E 48

36

What is 334 hours in days and hours?

$$\begin{array}{r} 334 \\ - 312 \\ \hline 022 \text{ hrs} \end{array}$$

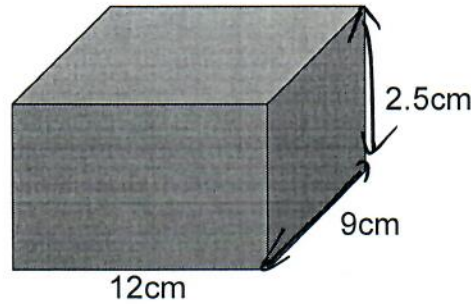
$$\begin{array}{r} 312 \\ + 24 \\ \hline 336 \end{array}$$

$$\begin{array}{l} 260 = 10 \text{ days} \\ 264 = 11 \text{ days} \\ 288 = 12 \\ + 24 \\ \hline 312 = 13 \\ 336 = 14 \times \end{array}$$

- A 25days 4hrs B 13days 34hrs C 24days 14hrs D 12days 18hrs E 13days 22hrs

37

The cuboid below is 12cm by 9cm by 2.5cm.



$$\begin{array}{r} 2.5 \\ \times 9 \\ \hline 22.5 \end{array}$$

What is the area of the smallest face of the cuboid?

- A 30cm² B 16.5cm² C 270cm² D 22.5cm² E 108cm²

38

$$3^3 \times 1.23 \rightarrow 3 \times 3 \times 3 = 27$$

$$\begin{array}{r} 1.23 \\ \times 27 \\ \hline 861 \\ 2460 \\ \hline 33.21 \end{array}$$

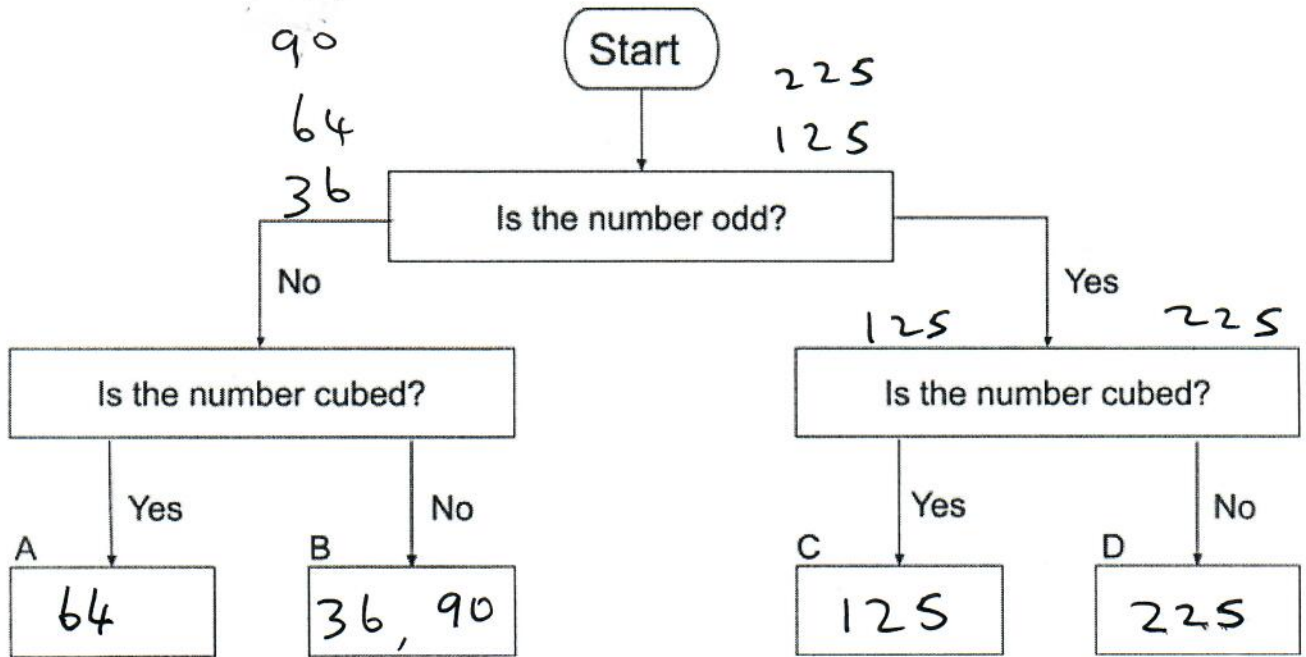
What is the value of the calculation above?

- A 33.21 B 112.5 C 11.07 D 45.78 E 0.621

Look at the 6 numbers in the rectangle below.



Now look at the decision tree below.

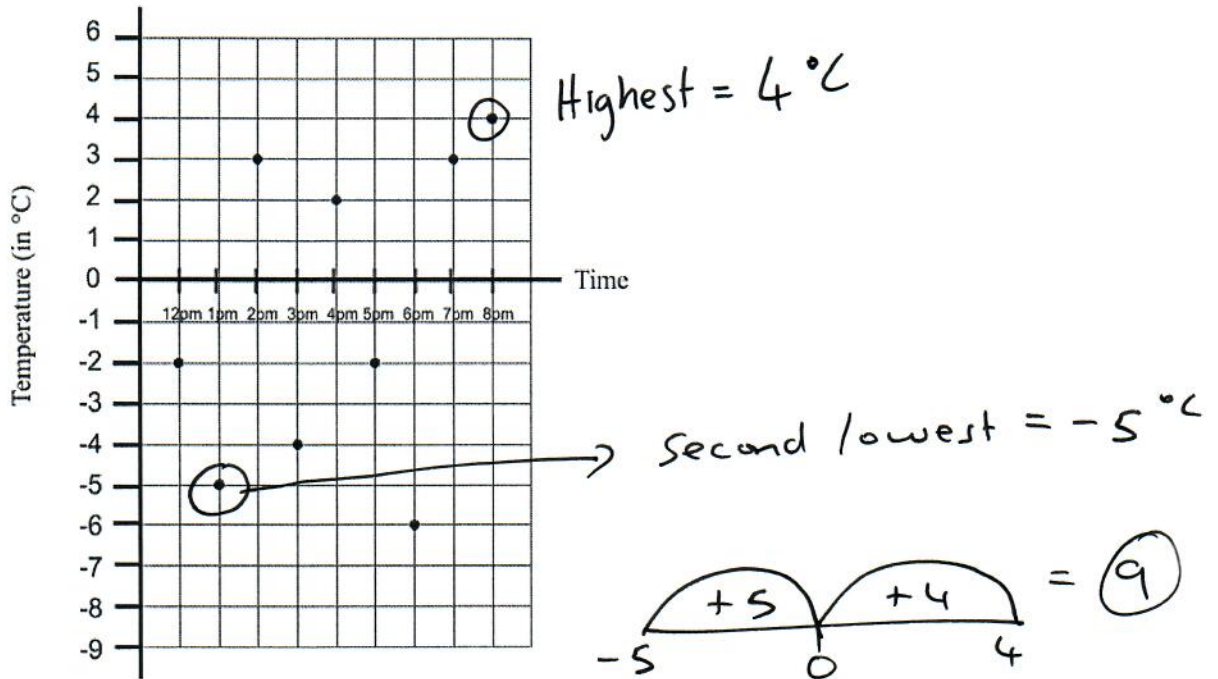


When put through the decision tree which of the numbers in the rectangle above will end up in box C?

- A 36
- B 64
- C 90
- D 125**
- E 225

40

The temperature is recorded every hour from 12pm-8pm. The results are shown in the graph below.



What is the difference between the highest and second lowest temperature recorded?

- A 8°C B 10°C C 12°C **D 9°C** E 11°C

41

Look at the statement below.

$$\frac{5}{10} \overset{\times 10}{=} \frac{50}{100}$$

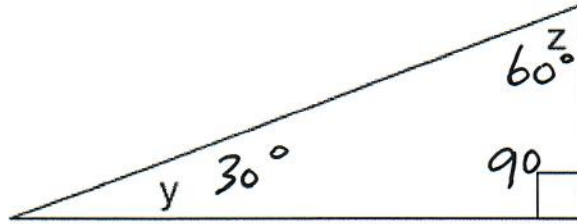
5 tenths is the same as 50 hundredths.

What number needs to be inserted above to make the statement true?

- A 0.05 B 0.5 C 5 **D 50** E 500

42

Look at the triangle below



Angle y is 30° smaller than angle z.

What is the size of angle z?

- A 15° B 30° C 45° **D 60°** E 90°

$$\frac{180}{-90} = 90$$

$$y + z = 90$$

$$\begin{array}{r} 45 \quad 45 \\ -15 \quad +15 \\ \hline 30 \quad 60 \end{array}$$

43

A baker has a 450 g bag of sugar. It contains 25 spoonfuls of sugar. They want to calculate how many grams of sugar a spoonful holds.

A: $25 \div 450$

B: 25×450

C: $450 \div 25$

D: $25 + 450$

E: $450 - 25$

$$25 \overline{)450}$$

Look at the four calculations above.

Which calculation must the baker do to calculate how many grams of sugar a spoonful holds?

- A A B B **C C** D D E E

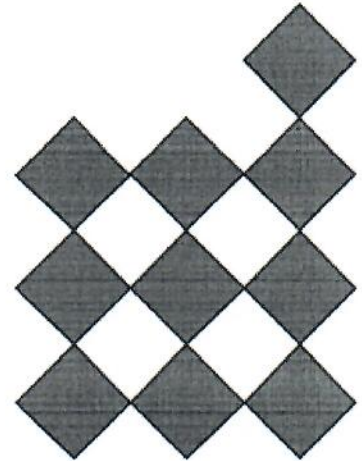
Look at the sequence of 3 patterns below. Each pattern is made up of small squares.



Pattern 1



Pattern 2



Pattern 3

Look at the **table below**. It shows the number of small squares in each pattern.

Pattern	1	2	3
Small Squares	2	5	10

How many squares are needed to make Pattern 8?

- A 56
- B 82
- C 42
- D 37
- E 65**

1	2	3	4	5	6	7	8
2	5	10	17	26	37	50	65
	+3	+5	+7	+9	+11	+13	+15

22 x 2.3 = 50.6

$\frac{22}{\div 2 \div 11}$

$\frac{02.3}{11 \overline{) 25.33} = 2.3$

What number needs to be inserted above to make the statement true?

- A 77.6
- B 9.98
- C 2.3**
- D 28.6
- E 1113.2

46

Look at the menu below.

Menu	
Fish -	£4.24
Chips -	£1.39

$$\begin{array}{r} 4.24 \\ \times 7 \\ \hline 29.68 \end{array}$$

$$\begin{array}{r} 1.39 \\ \times 3 \\ \hline 4.17 \end{array}$$

What is the cost of 7 fish and 3 portions of chips?

A £22.45

B £33.85

C £25.78

D £34.64

E £28.39

$$\begin{array}{r} 29.68 \\ + 04.17 \\ \hline \pounds 33.85 \end{array}$$

47

An athlete takes 7 minutes to run 3500 metres at a steady speed.

How long would they take to run 2 kilometres at the same steady speed?

A 3.5mins

B 4mins

C 4.5mins

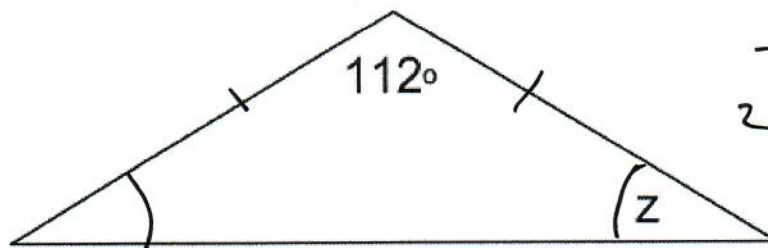
D 5mins

E 5.5mins

$$\begin{array}{l} \div 7 \left\{ \begin{array}{l} 7m = 3500m \\ 1m = 500m \end{array} \right. \div 7 \\ \times 4 \left\{ \begin{array}{l} 4m = 2000m \end{array} \right. \times 4 \end{array}$$

48

Look at the isosceles triangle below



$$\begin{array}{r} 180 \\ - 112 \\ \hline 2 \overline{) 068} \\ \underline{34} \end{array}$$

What is the value of z?

A 98°

B 68°

C 180°

D 124°

E 34°

49

Look at the fractions below.

$$\frac{13}{20} \stackrel{\times 5}{=} \frac{65}{100} \stackrel{\times 5}{=}$$

70%	75%	65%	80%	50%
$\frac{7}{10}$	$\frac{3}{4}$	$\frac{13}{20}$	$\frac{4}{5} = \frac{8}{10}$	$\frac{1}{2}$

Which fraction above is nearest in value to 60%?

A $\frac{7}{10}$

B $\frac{3}{4}$

C $\frac{13}{20}$

D $\frac{4}{5}$

E $\frac{1}{2}$

50

At a bank, £1 can be exchanged for 1.2 euro. Look at the 5 statements below.

- A: 1 euro can be exchanged for about 80p
- B: 1 euro can be exchanged for about 90p
- C: 1 euro can be exchanged for about 100p
- D: 1 euro can be exchanged for about 110p
- E: 1 euro can be exchanged for about 120p

$$100p = 120c \quad \left. \begin{array}{l} \div 6 \\ \times 5 \end{array} \right\}$$

$$16.6p = 20c$$

$$83p = 100c \quad \left. \begin{array}{l} \div 6 \\ \times 5 \end{array} \right\}$$

(Fish)

Which statement above is the most accurate?

- A A**
- B B
- C C
- D D
- E E

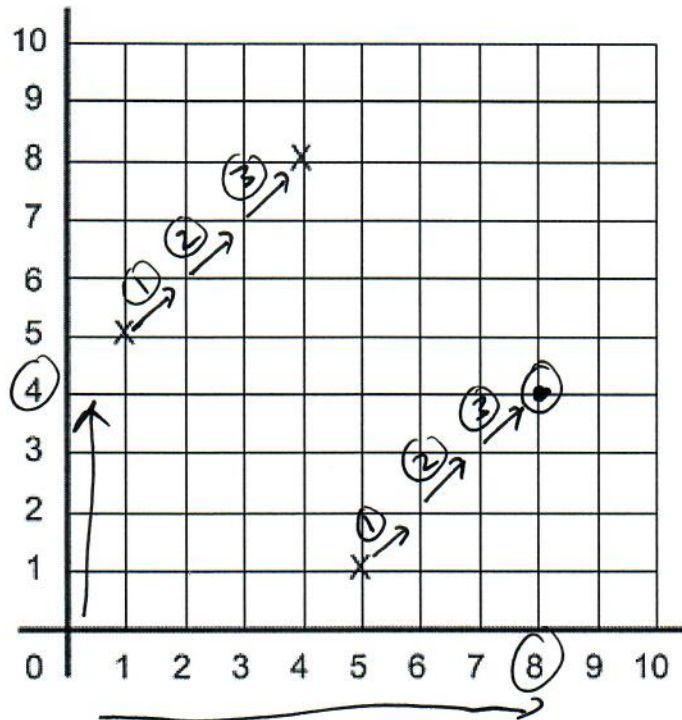
$$6 \overline{) 016.6} = 2.766\bar{6}$$

$$\begin{array}{r} 33 \\ 16.6 \\ \times 5 \\ \hline 83.0 \end{array}$$

For questions 51–56, you have to **write your answers** in the boxes provided on your answer sheet. The units of measurement have been given.

51

Look at the coordinates grid below.



There are 3 points marked on the grid (1,5), (4,8) and (5,1). These are three vertices of a rectangle.

What would the coordinates of the 4th vertex of the rectangle be?

(8,4)

52

If $\frac{2}{5}$ of $x = 14$

Then 90% of $x =$ _____

What number makes the statement above true?

$$2 \overline{)14} \quad 7 \times 5 = 35$$

$$35 = x$$

$$90\% \text{ of } 35 = 31.5$$

$$\begin{array}{r} 3.5 \\ \times 9 \\ \hline 31.5 \end{array}$$

31.5

53

A child is playing a computer game. The computer records their scores each time it is played.

They played the game 6 times.

The mean (average) score was 14

The range of their scores were 9

Their Lowest Score was 8

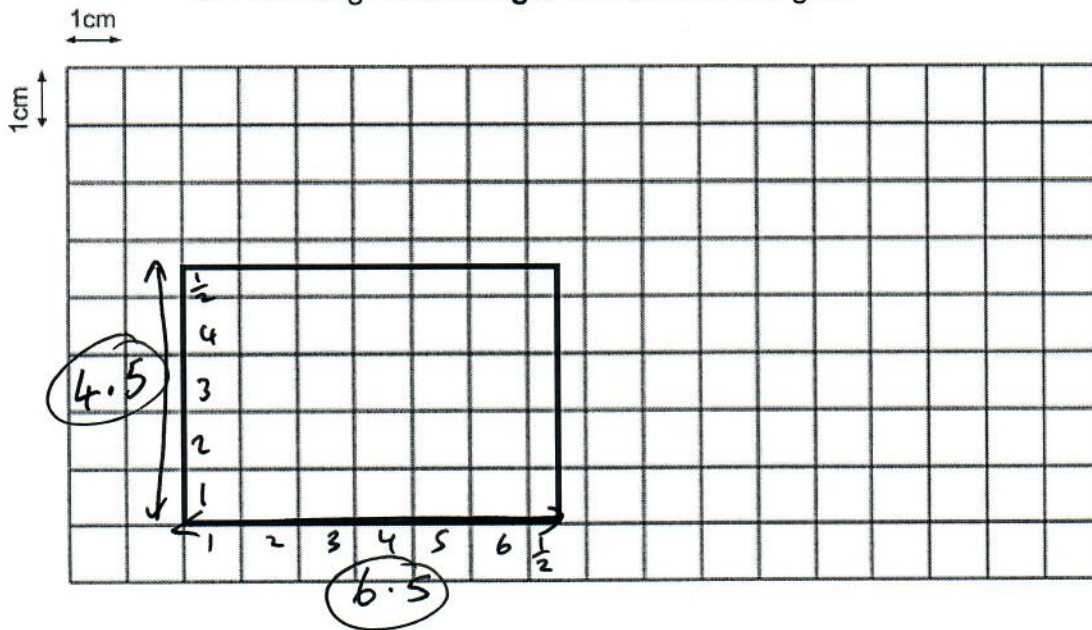
$$\begin{array}{r} 214 \\ \times 6 \\ \hline 84 \end{array}$$

What was the child's total score?

84

54

Look at the grid below. It is made up of small squares. The side of each small square is 1 cm long. A **rectangle** is drawn on the grid.



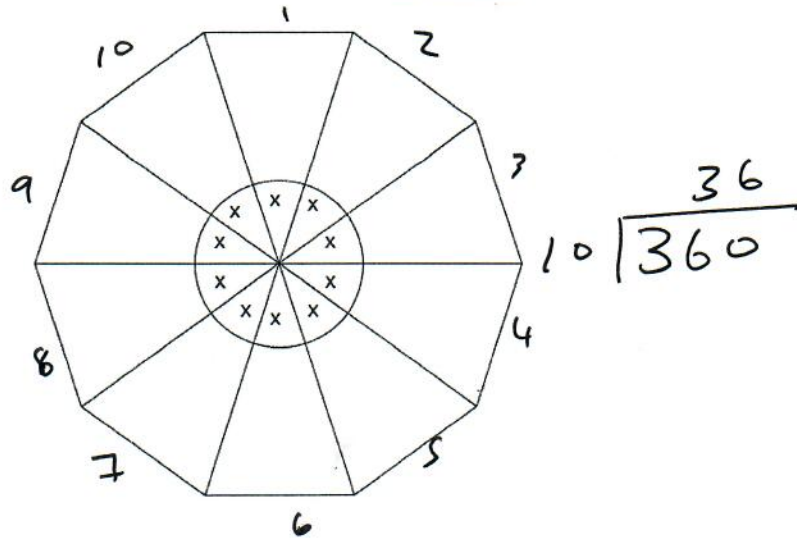
$$\begin{array}{r} 3 \\ 2 \\ \times 4.5 \\ \hline 225 \\ 2700 \\ \hline 29.25 \end{array}$$

What is the area of the rectangle?

29.25

55

Look at the shape below. It is a regular decagon. = 10 sides

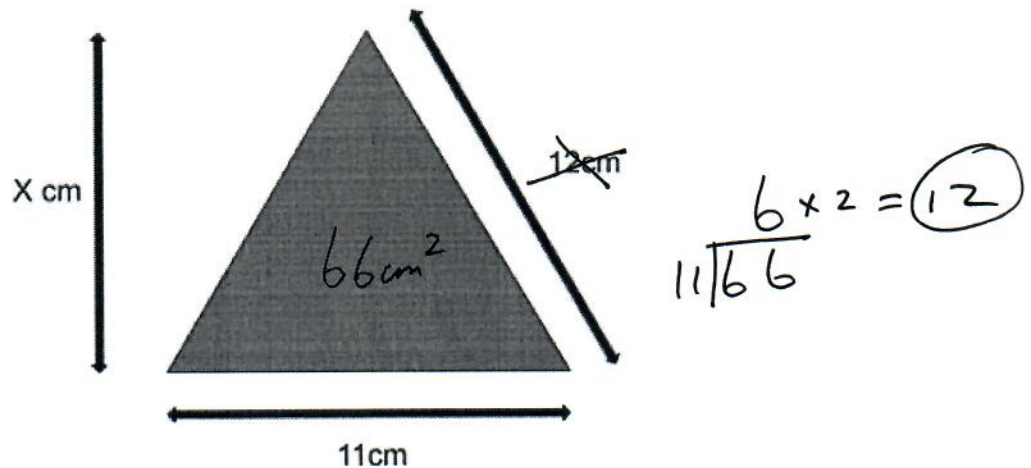


What is the size of angle x?

36°

56

The area of a triangle is 66 cm^2



What is the value of x?

$$(x \times 11) \div 2 = 66$$

$$\times 2$$

12