

STIRLING TUITION
SEAG
Entrance Assessment



STIRLING TUITION
WWW.STIRLINGTUITION.COM

Practice Paper 8

(Cut Answer Sheet from Back Page)

English – Practice Test

In this question there is either **one** punctuation mistake or **no** punctuation mistake. Find the group of words with the mistake in it and mark its letter on your answer sheet. **If there is no mistake, mark N.**

P1 "Look over there," he whispered softly, "I can see something in the distance! What is it?"

A B C D

Question

?

In this question you have to choose the **best** word to complete the sentence, so that it makes sense and is written in correct English. Choose the **best** answer and mark its letter on your answer sheet.

P2 I said wish want ask promise

A B C D E

that she would stop talking. She is giving me a headache.

In this question there is either **one** spelling mistake or **no** spelling mistake. Find the group of words with the mistake in it and mark its letter on your answer sheet. **If there is no mistake, mark N.**

P3 She thought for a moment and then turned to him with a puzzeld expression on her face.

A B C D

puzzled

Read this passage to yourself.

The family had spent hours poring over holiday websites, arguing and debating about where they should go. In the end, they all agreed that the hotel in the south of Spain would satisfy everyone's desires. It had three swimming pools, one of which had an enormous water slide and a wave machine! It had a relaxing spa for mum to unwind in and a golf course just across the road for dad. The holiday was booked and they were all counting down the days until July.

Answer this question. Choose **one** answer from the options below and mark its letter on your answer sheet.

P4

Which of the following is true the hotel?

- A Not all of the family want to go to the hotel.
- B The hotel is near a golf course.
- C The hotel has three restaurants.
- D The hotel is in the north of Spain.
- E The hotel is on the beach.

For this question, you have to write your answer in the box provided on your answer sheet (box P5).

P5

Which **one word** from the passage means the same as "wishes"?

Desires



Maths – Practice Test

P6



A full bottle of milk contains 525ml.

How many litres of milk are in 8 full bottles?

A 4

B 4000

C 4.2

D 5.25

E 4200

$$\begin{array}{r} 2 \quad 4 \\ 525 \text{ ml} \\ \times 8 \\ \hline 4200 \text{ ml} \end{array}$$

$1 \text{ L} = 1000 \text{ ml}$

$$4200 \div 1000 = 4.2$$

P7

$\frac{4}{25}$ is equal to _____%

What number needs to fill to gap above to make the statement correct?

A 25

B 16

C 4

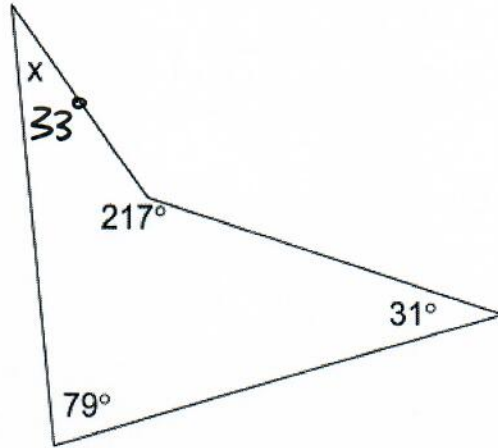
D 20

E 21

$$\frac{4}{25} = \frac{16}{100} = 16\%$$

P8

Look at the quadrilateral below.



$$\begin{array}{r} 11 \\ 217 \\ 79 \\ + 31 \\ \hline 327 \end{array}$$

$$\begin{array}{r} 510 \\ 327 \\ - 327 \\ \hline 033 \end{array}$$

What is the value of x ?

A 101°

B 327°

C 31°

D 11°

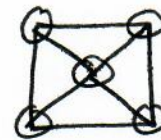
E 33°

For these questions you have to **write your answers** in the boxes provided on your answer sheet (box P9 and P10). The units of measurement have been given.

P9

What 3D shape has 8 edges and 5 faces?

Square based Pyramid



P10

Sam has been playing 5 aside football with his friends. He goes to the shop to buy himself and his 4 team mates a bottle of Lucozade. He pays with a £10 note and gets £3.50 change. **(5)**

How much did it cost for 1 bottle of Lucozade?

£1.30

$$\begin{array}{r} 918.00 \\ - 03.50 \\ \hline 516.50 \\ 1.30 \end{array}$$



English – Main Test

In this exercise there are some mistakes with **punctuation** or use of **capital letters**. On each numbered line there is either **one** mistake or **no** mistake. Find the group of words with the mistake in it and **mark its letter on your answer sheet**. If there is no mistake, mark **N**.

Punctuation Exercise

1 “Don’t be silly!” he said rudely. “Why would we walk when my dad can give us a [?]lift.”
↑ A ↑↑ B ↑↑ C ↑↑ D ↑

Question

2 The passageway (which is hidden behind the bookcase) leads to a secret room in the attic.
↑ A ↑↑ B ↑↑ C ↑↑ D ↑

Close brackets

3 The British Prime Minister is visiting schools and businesses in Belfast today.
↑ A ↑↑ B ↑↑ C ↑↑ D ↑

Capital letter

4 Of course, I’d love to bring my dog on holiday next week but pets aren’t allowed in the hotel.
↑ A ↑↑ B ↑↑ C ↑↑ D ↑

Apostrophe

5 I can’t eat cakes, pasta, sandwiches or ice cream as I am allergic to eggs and wheat.
↑ A ↑↑ B ↑↑ C ↑↑ D ↑

list

In this exercise you have to choose the **best** word, or **group of words**, to complete each numbered line so that the passage makes sense and is written in correct English. Choose the best answer and **mark its letter on your answer sheet**.

Grammar Exercise

6

I don't want to go on the rollercoaster because I am afraid

on of in at with heights.
A B C D E

7

That is the best chocolate cake I have ever

tasted taste tasting will taste tastes .
A B C D E

8

I don't mind cooking dinner,

so if but or when I don't like washing up.
A B C D E

9

I wanted to go to bed but they were not in a

fast speed worry move hurry to leave.
A B C D E

10

"I will help you with the first question," she said to the students. "But you must do

the rest by themselves ourselves yourself yourselves myself ."
A B C D E

In this exercise there are some **spelling** mistakes. On each numbered line there is either **one** mistake or **no** mistake. Find the group of words with the mistake in it and **mark its letter on your answer sheet**. If there is no mistake, mark **N**.

Spelling Exercise

11 You must never eat the berries from that bush. They are extremely poisonous.

A B C D

12 She knew about the party but she pretended to be surprised when she opened the door.

A B C D N

13 Have you met our new neighbours yet? I am very curious to find out more about them.

A B C D

14 It was thoughtful of Jenny to wash the dishes, I was really grateful for her help.

A B C D

15 The couple decided to get married at the beginning of May when the weather was warmer.

A B C D

Read the **whole** passage carefully, then answer the questions that follow.

Wilkie's Treasure

1. Everyone in the seaside village of Trevally knew about the infamous ⁽¹⁶⁾ Wilkie Wallace and
2. his ⁽²⁸⁾ mythical treasure. Wallace had been a notorious ⁽¹⁵⁾ smuggler and ⁽¹⁶⁾ pirate in the
3. eighteenth century. According to the legend, he fell in love with Helen Cosgrove, the
4. daughter of a local lord. They had planned to run away together living off the proceeds
5. of Wilkie's ⁽²³⁾ latest haul, a collection of ⁽²⁵⁾ priceless blue diamonds. Wilkie and Helen planned
6. to meet in a secret cave along the coast. However, on the night of the planned escape, a
7. terrible storm hit the south coast. It is said that the high waves prevented the couple
8. from escaping by boat to sea as planned and, as the tide rose, it flooded the cave where
9. Wilkie and Helen were hiding, drowning them both. Helen and Wilkie were never seen
10. again, but the story of the blue diamonds endured. Many a treasure hunter had scoured
11. the coastline for Helen's Cave, but none had found it.
12. Katie and Jack had grown up in Trevally, listening to the old tales of Wilkie Wallace, but
13. they never thought that the legend could be ⁽²³⁾ real. The beach was their playground ⁽¹⁷⁾ and
14. they knew every crack and crevice, every rock pool and boulder. There was no way that
15. they could have missed Helen's Cave. One morning, after a particularly bad autumn
16. storm, the pair were walking along the beach when they noticed a cave they had never
17. seen before. The sheer force of the ocean had ripped the rocks aside to reveal a small
18. crack in the cliff. Katie looked at Jack, "Are you thinking what I'm thinking?" Jack eyes
19. widened and his mouth gaped ⁽¹⁸⁾, "Of course, it must be the cave, it was hidden ⁽²³⁾ all this
20. time!" Not wanting to draw attention to the cave, Katie and Jack planned to go back that
21. night and investigate away from prying eyes.
22. It was the perfect night for adventure. The harvest moon shone high and bright like a ⁽¹⁹⁾
23. huge golden coin in the sky. Its amber glow pierced through the gap in Katie's curtains.
24. A low hooting sound cut through the silence - it was Jack's signal! ⁽²⁴⁾ Katie slipped out of
25. bed, taking care not to tread on the squeaky floorboard under the windowsill. Easing the

26. window up gently, she swung her legs out and grasped hold of the nearest branch of the
27. oak tree which butted against the walls of the house. Nimbly she clambered down the
28. branches until she reached the ground. Jack was waiting in the shadows under the tree,
29. "Are you ready?" Jack whispered. Katie grinned and nodded her head, she was too
30. excited to speak.

31. When they reached the cliffs, the pair negotiated their way carefully down the
32. crumbling trail that led to the beach. The trail was treacherous, even to those who knew
33. it well and the children had never descended it the dark. With the light of the moon
34. guiding their cautious footsteps, the children moved at a snail's pace towards the beach
35. below. As they reached the beach, Jack stopped so suddenly that Katie bumped against
36. him. Before Katie realised what was happening, he had pulled her behind a large
37. boulder, covering her mouth as they hit the sand. "Shhhh!" he whispered urgently and
38. then pointed towards the cave. Katie peered round the side of the rock and saw that the
39. entrance of the cave was lit by a dim glow. Over the low rumble of the surf she could
40. hear voices.

41. Presently two men came to the entrance of the cave. One of the men held a powerful
42. torch which he pointed towards the sea and flashed on and off at regular intervals. Flash
43. – pause – flash, flash – pause. "They must be signalling to someone!" Jack whispered. At
44. that moment, they heard the low drone of a boat engine growing louder as it
45. approached the shore.

Please answer these questions. (Look at the passage again if you need to.) You should choose the **best** answer and mark its letter on your answer sheet.

16

“the infamous Wilkie Wallace” (line 1) **Based on what you have read in this paragraph, what does the word “infamous” suggest about Wilkie Wallace?**

- A He is famous in the village.
- B He is famous for doing bad things.
- C He is not famous in the village.
- D He is well liked in the village.
- E He is a murderer.

17

“The beach was their playground” (line 13) **What does this suggest about the beach?**

- A There is a playground at the beach.
- B There is a school beside the beach.
- C The children don't have gardens so they play on the beach.
- D The children love to play on the beach.
- E The beach is private.

18

“Jack’s eyes widened and his mouth gaped.” (line 18 – 19) **What does this tell us about Jack?**

- A He is shocked to find the cave.
- B He has bad eyesight.
- C He has a big mouth.
- D He is annoyed with Katie
- E He is excited to find the cave.

19

“The harvest moon shone high and bright like a huge golden coin in the sky.” (line 22 – 23) **What type of literary technique is being used in these lines?**

- A alliteration
- B personification
- C simile
- D metaphor
- E onomatopoeia

20

“Nimble she clambered down the branches” (line 27 – 28)

What does this suggest about Katie?

- A She is not used to climbing the tree.
- B She is scared of heights.
- C She can't see where she is going in the dark.
- D She is used to climbing the tree.
- E She is scared of falling out of the tree.

21

Look at lines 35 – 40. Why does Jack stop suddenly?

- A He is out of breath from climbing down the cliff.
- B He has fallen over.
- C He sees the light from the cave.
- D He is waiting for Katie to catch up with him.
- E He sees a boat in the sea.

22

Look at lines 41 – 45. Who are the men signalling to?

- A Someone on the cliff.
- B Someone on the beach.
- C Someone in the cave.
- D Jack and Katie.
- E Someone in a boat.

For these questions you have to **write your answers**, neatly, in the boxes provided on your answer sheet.

23

Who was Helen Cosgrove?

Daughter of Local Lord

24

What animal does Jack imitate to signal to Katie?

owl

25

Which word in line 5 means the same as “more valuable than money”?

Priceless

26

Which word in line 32 means the same as “dangerous”?

Treacherous

27

Which part of speech is “glow” as it appears in the passage? (line 39)

Noun

28

Which one part of speech are the following as they appear in the passage?

mythical (line 2) latest (line 5) real (line 13) hidden (line 19)

Adjectives

Maths – Main Test

29

Clare sits two tests in school for Maths and English.
Her results are listed below:

• Maths: $\frac{36}{48} \div 12 = \frac{3}{4} = 75\%$
 $\frac{36}{48} \div 12 = \frac{3}{4} = 75\%$

• English: $\frac{35}{50} \times 2 = \frac{70}{100} = 70\%$
 $\frac{35}{50} \times 2 = \frac{70}{100} = 70\%$

$$\begin{array}{r} 75 \\ - 70 \\ \hline 05 \end{array}$$

What is the difference between her percentage score in Maths and her percentage score in English?

A 5%

B 75%

C 9%

D 15%

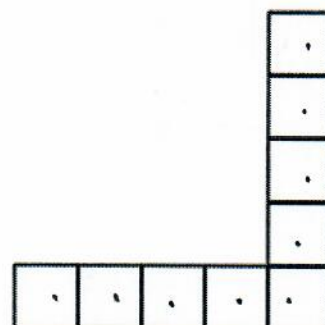
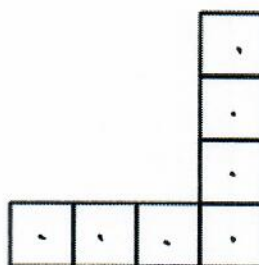
E 70%

30

Look at the patterns below made up of square tiles. The first two patterns are missing.

?

?



Pattern 1

Pattern 2

Pattern 3

Pattern 4

How many square tiles are in Pattern 1?

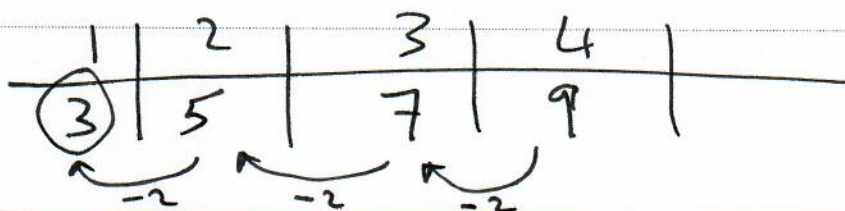
A 5

B 7

C 9

D 3

E 1



31

Clare has two part time jobs on a Saturday. She delivers newspapers from 9:43am to 11:51am. She then goes to work at a local café from 12:05 till 1:44pm, covering the lunch service.

How long does she work on a Saturday in total, not including her travel time?

A 2h 8m

B 4h 1m

C 3h 47m

D 1h 39m

E 2h 22m

$$\begin{array}{r} 13:44 \\ -12:05 \\ \hline 01:39 \\ \text{Café} \end{array}$$

$$\begin{array}{r} 2:08 \\ + 1:39 \\ \hline 3:47 \end{array}$$

$$\begin{array}{r} 11:51 \\ - 9:43 \\ \hline 2:08 \\ \text{Newspapers} \end{array}$$

32

Barney rolls a ten-sided dice. Listed below are five possible outcomes:

Outcome A: He rolls a multiple of 3 $\frac{3}{10}$



Outcome B: He rolls an odd number $\frac{5}{10} = \frac{1}{2} = 50\%$

Outcome C: He rolls a multiple of 5 $\frac{2}{10}$

Outcome D: He rolls a 6 or above $\frac{5}{10} = \frac{1}{2} = 50\%$

Outcome E: He rolls a number below 5 $\frac{4}{10}$

Look at the five outcomes above. Which two outcomes have a 50% chance?

A A,C

B B,D

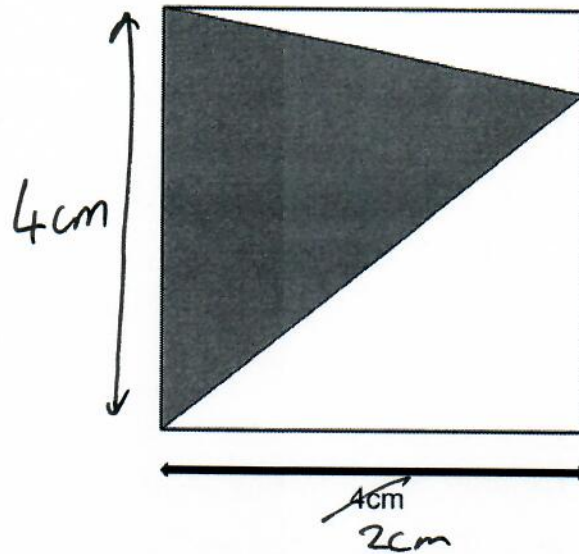
C C,E

D B,E

E D,E

33

Look at the diagram below. A triangle has been drawn inside a square. Each side of the square has a length 4 cm.



$4 \times 2 = 8 \text{ cm}^2$

What is the area of the triangle?

- A 4 cm^2 B 16 cm^2 C 12 cm^2 D 6 cm^2 **E 8 cm^2**

34

What is the value of the digit 4 in the number 91827.^t436?

- A 4 tenths** B 4 units C 4 hundredths D 4 tens E 4 hundreds

35

A holiday to Tenerife costs £330.

However, due to demand its price is increased by 20%.

$$\begin{array}{r} 330 \\ + 66 \\ \hline \pounds 396 \end{array}$$

$\times \frac{2}{10}$ of $33.0 = 66$

What is the new price of the holiday?

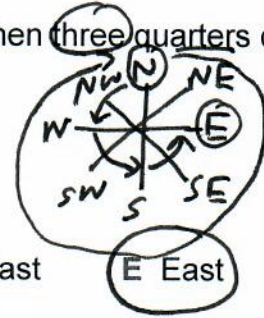
- A £264 B £66 **C £396** D £399 E £99

36

Gemma is facing North. She turns a full turn clockwise, then three quarters of a turn anticlockwise.

In which direction is she now facing?

- A South
- B South East
- C West
- D North East
- E East



37

It's Rebekah's birthday and her parents hire out Airtastic for an hour for £29.50. They also get the lunch package for the children. This costs £6.50 per person. There are 12 people in total at the birthday party.

What is the total cost for Rebekah's birthday?

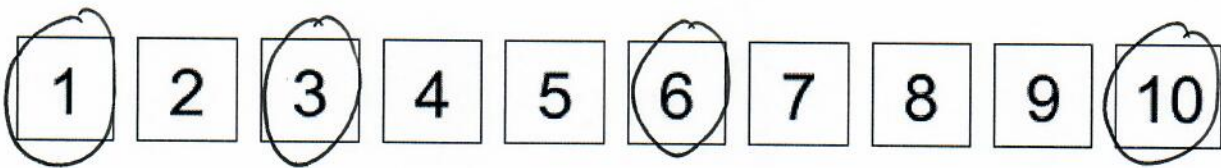
- A £107.50
- B £78.00
- C £94.50
- D £295.00
- E £102.50

$$\begin{array}{r}
 16.50 \\
 \times 12 \\
 \hline
 1300 \\
 6500 \\
 \hline
 \pounds 78.00
 \end{array}$$

$$\begin{array}{r}
 29.50 \\
 78.00 \\
 \hline
 \pounds 107.50
 \end{array}$$

38

Toby has number cards in front of him from 1-10.

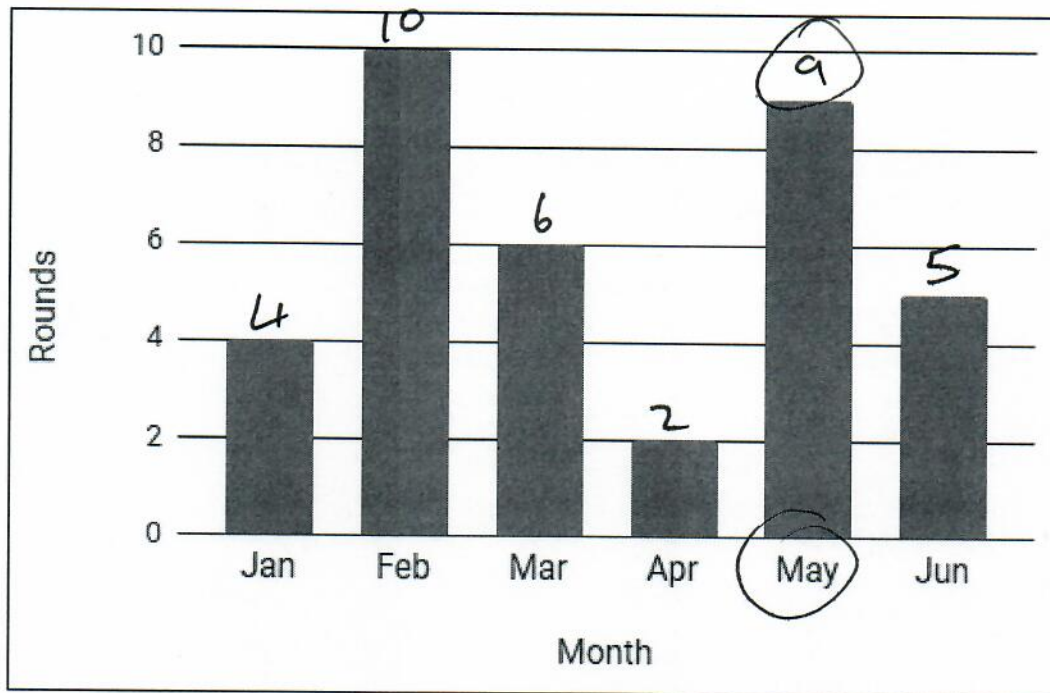


What percentage of the number cards are triangular numbers?

- A 10%
- B 20%
- C 30%
- D 40%
- E 50%

$$\frac{4}{10} = 40\%$$

For the first 6 months of the year Max records the number of rounds of golf he plays each month. Below is the bar chart which shows his results.



Look again at the bar chart in Q5. In one of the months during the above six month period, he played $\frac{1}{4}$ of his rounds of golf.

Which month was it?

- A February
- B March
- C April
- D May
- E June

$$\begin{array}{r}
 2 \ 4 \\
 1 \ 0 \\
 6 \\
 2 \\
 9 \\
 + \ 5 \\
 \hline
 36
 \end{array}$$

$$\frac{1}{4} \text{ of } 36 = 9 = \text{May}$$

40



$$\times \frac{3}{4} \text{ of } 2000 =$$

$$\begin{array}{r} 0500 \\ 4 \overline{) 2000} \end{array}$$

$$\begin{array}{r} 500 \\ \times 3 \\ \hline 1500 \end{array}$$

$$\begin{array}{l} \underline{\text{Dan} = 2000\text{m}} \\ \text{Joe} = 1500\text{m} \\ \underline{\text{Bob} = 750\text{m}} \end{array}$$

$$\div \frac{1}{2} \text{ of } 1500 = 750$$

$$\begin{array}{r} 750 \\ 2 \overline{) 1500} \end{array}$$

Joe, Dan and Bob are running in the 5km park run. They all set off at the same time. After 10 minutes of the race Dan has completed 2km of the park run. Joe has run $\frac{3}{4}$ of the distance that Dan has completed and Bob has run $\frac{1}{2}$ the distance that Joe has completed.

What is the difference in metres between Dan's distance and Bob's distance after 10 minutes?

- A 2000m **B 1250m** C 750m D 1500m E 250m

$$\begin{array}{r} 12500 \\ - 750 \\ \hline 1250 \end{array}$$

41

What number is exactly halfway between 126 and 178?

- A 138 **B 152** C 98 D 52 E 148

$$\begin{array}{r} 178 \\ + 126 \\ \hline 304 \\ 2 \overline{) 304} \\ \hline 152 \end{array}$$

42



Jen is testing her grip strength by seeing how long she can hold onto a pull up bar. She times herself each day over a week (7 days). Below are the times she achieved in seconds.

(8) 9 10 9 10 11 (13)

$$13 - 8 = 5 \text{ Jen}$$

Patrick also carries out the same grip test over the week and compares his results with Jen's. His times are listed below.

(4) 7 6 9 10 10 (14)

$$14 - 4 = 10 \text{ Pat}$$

What is the difference between Jen's range in Q16 and Patrick's range?

A 4

B 10

C 9

D 14

E 5

$$10 - 5 = 5$$

43

Look at the number sequence below. Four numbers of the sequence are given.

2 $\leftarrow -4$ 6 $\leftarrow -5$ 11 $\leftarrow -6$ 17 $\leftarrow -7$ 24

What is the 1st number in the sequence?

A 5

B 1

C 3

D 2

E 4

44

Look at the fractions below.

$$\frac{1}{5} = \frac{2}{10} = \frac{3}{15}$$

Handwritten annotations: A bracket above the first fraction is labeled $\div 2$. An arrow from the numerator 2 to the numerator 3 is labeled $\times 1.5$. An arrow from the denominator 10 to the denominator 15 is labeled $\times 1.5$. A bracket below the second fraction is labeled $\div 2$. An arrow from the denominator 10 to the denominator 25 is labeled $\times 2.5$.

What number is the question mark so that the two fractions are equivalent?

A 2.5

B 2

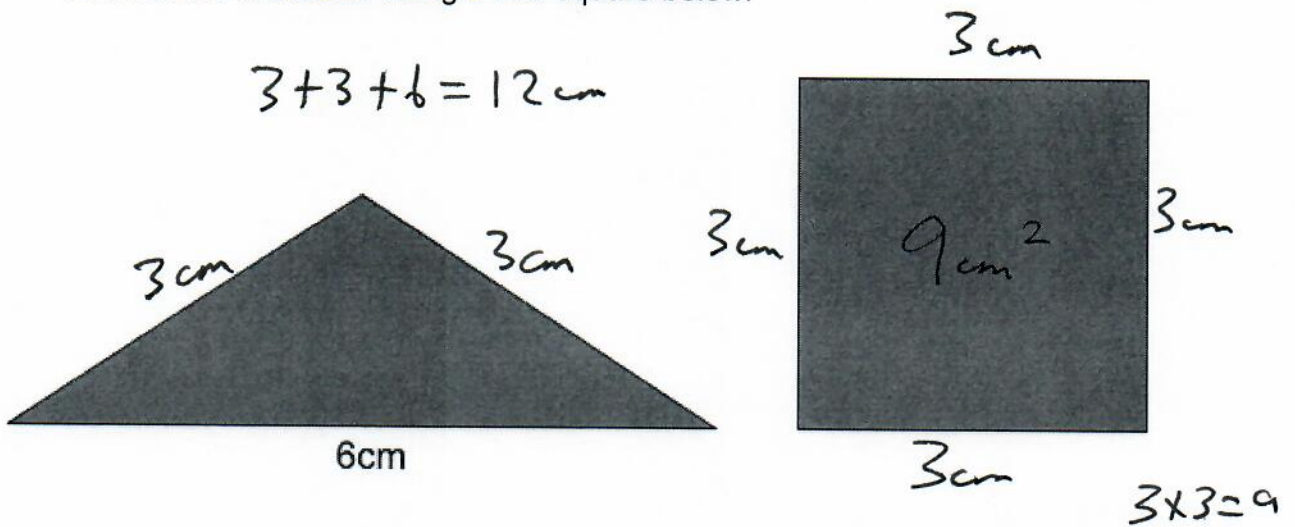
C 5

D 20

E 4

45

Look at the isosceles triangle and square below.



The triangle and square have the same perimeter.

If the sides of the triangle are 6cm and 3cm what is the area of the square?A 9cm²B 18cm²C 12cm²D 144cm²E 6cm²

46

Look at the equation below.

$$f + 9.62 = 56.7$$

What is the value of f?

$$\begin{array}{r}
 56.70 \\
 - 9.62 \\
 \hline
 47.08
 \end{array}$$

A 45.37

B 68.19

C 66.32

D 47.08

E 57.78

47

What percentage of 2 m is 90 cm?

A 45%

B 5%

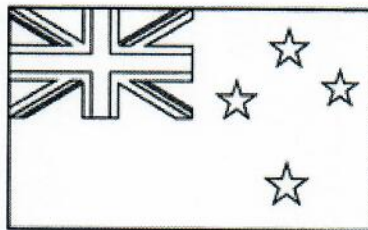
C 90%

D 29%

E 33%

$$\frac{90}{200} = \frac{45}{100}$$

48



NEW ZEALAND

Johnny is going back home to see his family in New Zealand. When he leaves + Belfast, the temperature is -7°C. When he lands in New Zealand it is 20°C warmer than in Belfast.

What is the temperature in New Zealand on his arrival?

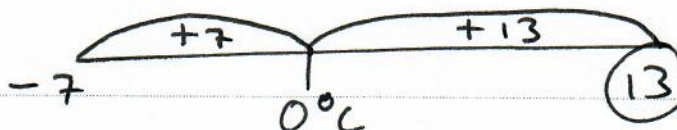
A 27°C

B 13°C

C 20°C

D 7°C

E 15°C



49

What is 394 mm in cm?

$$1 \text{ cm} \stackrel{\div 10}{=} 10 \text{ mm}$$

A 0.394

B 394

C 3.94

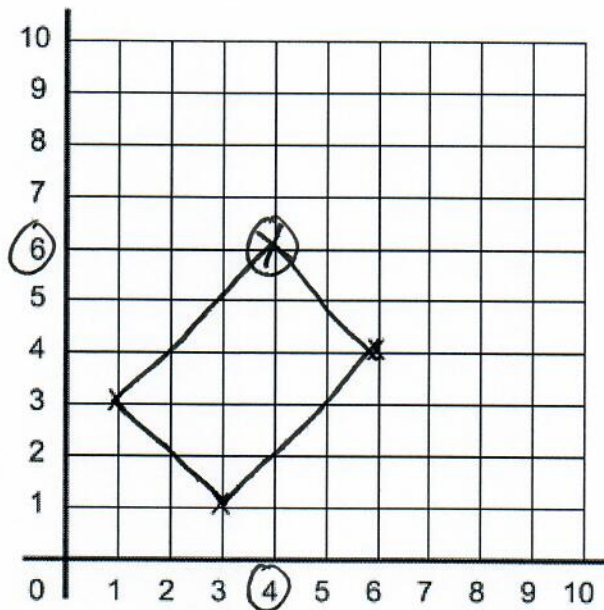
D 3940

E 39.4

$$394 \stackrel{\div 10}{=} 39.4$$

50

Look at the coordinates grid below.



There are 3 points marked on the grid (1,3), (3,1) and (6,4).
These are three vertices of a rectangle.

What would the coordinates of the 4th vertex of the rectangle be?

A (5,6)

B (4,7)

C (4,6)

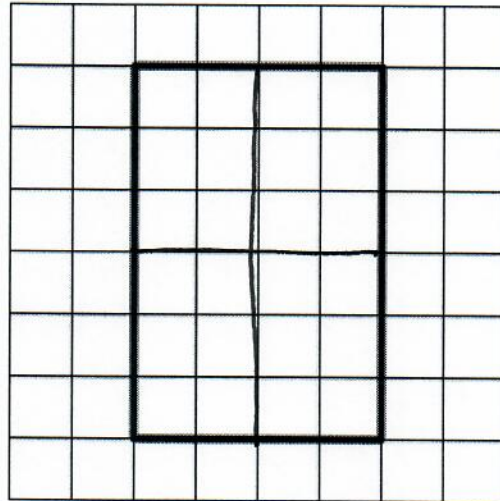
D (3,6)

E (4,5)

For questions 51–56, you have to **write your answers** in the boxes provided on your answer sheet. The units of measurement have been given.

51

Look at the shape drawn on the grid below.



How many lines of symmetry does the above shape have?

2

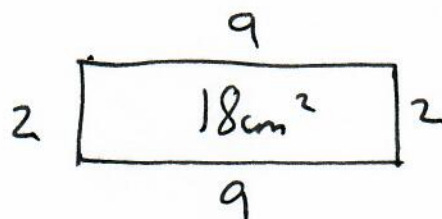
52

Michael draws a rectangle on a piece of paper and then writes the following description below.

- The area of the rectangle is 18cm^2 .
- The perimeter of the rectangle is 22cm .

What is the length and width of the rectangle?

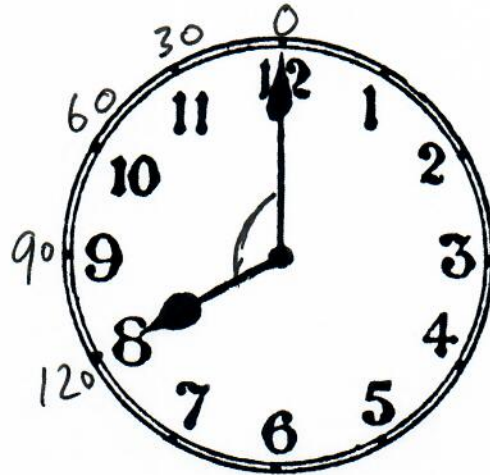
2 and 9



$$\begin{aligned} 1 \times 18 &= 18 \\ 2 \times 9 &= 18 \\ 3 \times 6 &= 18 \end{aligned}$$

53

Look at the clock below. The time is 8 o'clock.



obtuse = $90^\circ - 180^\circ$

What is the obtuse angle between the hands of the clock?

120°

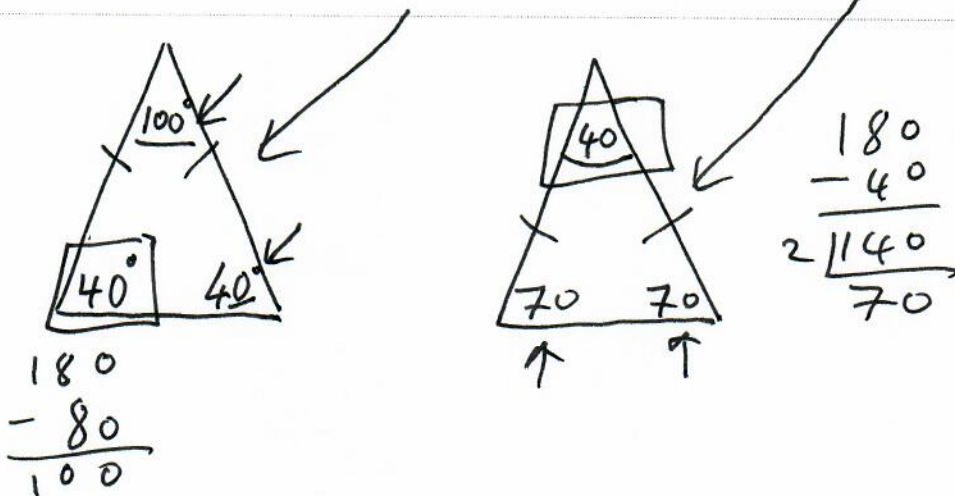
54

One of the angles in an isosceles triangle is 40° .

There are two possible answers for what the remaining two angles will be.

What are the two possible answers for the missing angles in the isosceles triangle?

$40^\circ, 100^\circ$ and $70^\circ, 70^\circ$





Sophie plays the piano. Her parents use the formula below to give her pocket money, depending on how many hours she practices.

$$\text{Pocket money} = 50\text{p} \times \text{Number of Hours Practiced} + \text{£}5$$

7

$$\begin{array}{r} 50 \\ \times 7 \\ \hline \text{£}350 \end{array}$$

How much pocket money does she get if she practices for 7 hours?

£8.50

$$\begin{array}{r} 3.50 \\ + 5.00 \\ \hline \text{£}8.50 \end{array}$$

A palindromic number is one which reads the same forwards as backwards. 3443 is an example of a palindromic number.

What is the first palindromic number after 1200?

1221