

STIRLING TUITION
SEAG
Entrance Assessment



STIRLING TUITION
WWW.STIRLINGTUITION.COM

Practice Paper 7

(Cut Answer Sheet from Back Page)

English – Practice Test

In this question there is either **one** punctuation mistake or **no** punctuation mistake. Find the group of words with the mistake in it and mark its letter on your answer sheet. **If there is no mistake, mark N.**

P1

“Go faster!” I shouted. You need to go faster if we are going to get there on time!”

A B C D

Speech marks

In this question you have to choose the **best** word to complete the sentence, so that it makes sense and is written in correct English. Choose the **best** answer and mark its letter on your answer sheet.

P2

We had to borrow an umbrella from the hotel as someone had stolen

us it theirs ours our .

A B C D E

In this question there is either **one** spelling mistake or **no** spelling mistake. Find the group of words with the mistake in it and mark its letter on your answer sheet. **If there is no mistake, mark N.**

P3

I wouldn't recommend that film for your sister. It is far too frightning for young children.

A B C D

frightening

Read this passage to yourself.

Extract from Heidi by Johanna Spyri

This was the home of Peter the Goatherd, an eleven-year-old boy who each morning went down to the village to fetch the goats and drive them to the upper reaches of the pasture, where they munched on the short, strong herbs. In the evening Peter scampered with the nimble creatures back to the village, and their owners collected them from the square on hearing him whistle sharply through his fingers. It was mainly small boys and girls who came, the goats being too gentle to inspire fear, and throughout the summer this was the only time of day when Peter saw children his own age; otherwise the goats were his sole companions.

Answer this question. Choose **one** answer from the options below and mark its letter on your answer sheet.

P4

Which of the following is true about Peter's daily routine?

- A He takes the goats from the pasture up to the village.
- B He drives the goats up to the pasture in a van.
- C He takes the goats from the village up to the pasture and then back down to the village.
- D He looks after the goats and then returns them to their owners' houses.
- E He comes down to the village with herbs to feed the goats.

For this question, you have to write your answer in the box provided on your answer sheet (box P5).

P5

Which **one word** from the passage means the same as "friends"?

Companions



Maths – Practice Test

P6



$$\begin{array}{r}
 337 \\
 29 \\
 63 \\
 21 \\
 +9 \\
 43 \\
 +47 \\
 \hline
 259
 \end{array}$$

John is training for a race and he runs every day for a full week. The number of minutes that he spends running each day is given below.

- ① 37 ② 29 ③ 63 ④ 21 ⑤ 19 ⑥ 43 ⑦ 47

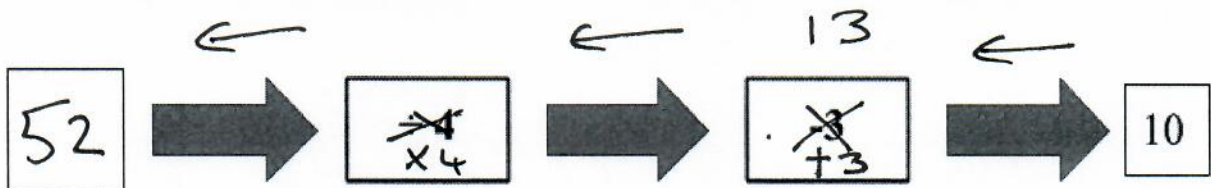
$$\begin{array}{r}
 037 \\
 7 \overline{)259} \\
 \underline{71} \\
 549 \\
 \underline{56} \\
 9
 \end{array}$$

What is the mean (average) amount of time that John spends running?

- A 36 B 41 **C 37** D 34 E 43

P7

Look at the function machine below. The starting number is missing.



What starting number is needed to complete the function machine?

- A 1.75 **B 52** C 28 D 3.25 E 11

$$\begin{array}{r}
 13 \\
 \times 4 \\
 \hline
 52
 \end{array}$$

P8

How many hours are there in 7 days?

$$\begin{array}{r} 24 \\ \times 7 \\ \hline 168 \end{array}$$

A 84

B 240

C 420

D 154

E 168

For these questions you have to **write your answers** in the boxes provided on your answer sheet (box P9 and P10). The units of measurement have been given.

P9

Below are three statements about triangles. One of the statements is false.

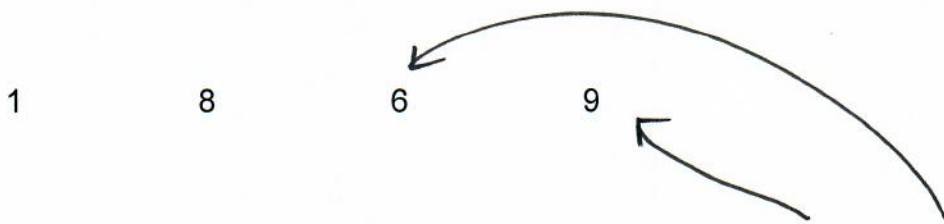
1. Two sides of an isosceles triangle are the same length. ✓
2. The individual angles in an equilateral triangle are 180° . ✗ 60°
3. The three angles of a scalene triangle are always different. ✓

What is the number of the false statement (1,2,3)?

2

P10

Look at the four numbers below. These can be arranged to make a four-digit number. For example: 1869



How can these numbers be rearranged to make the largest, even, four-digit number possible?

9816



English – Main Test

In this exercise there are some mistakes with **punctuation** or use of **capital letters**. On each numbered line there is either **one** mistake or **no** mistake. Find the group of words with the mistake in it and **mark its letter on your answer sheet**. If there is no mistake, mark **N**.

Punctuation Exercise

- 1 He is a talented athlete and if he trains hard then he could make it to the Olympic games. *Capital letter*
- ↑ A ↑↑ B ↑↑ C ↑↑ D ↑
- 2 "The exam will be difficult" our teacher said. "However, I think that you are all ready for it." *need punctuation before close of speech marks.*
- ↑ A ↑↑ B ↑↑ C ↑↑ D ↑
- 3 I think we should get Lucy a book token for her birthday. She likes reading, doesn't she? *Question?*
- ↑ A ↑↑ B ↑↑ C ↑↑ D ↑
- 4 He was terrified of many things but most especially spiders, snakes and being stuck in a lift. *Comma for list*
- ↑ A ↑↑ B ↑↑ C ↑↑ D ↑
- 5 If you have nothing else planned, you're welcome to join us for a game of tennis at the park.
- ↑ A ↑↑ B ↑↑ C ↑↑ D ↑
- N

In this exercise you have to choose the **best** word, or **group of words**, to complete each numbered line so that the passage makes sense and is written in correct English. Choose the best answer and **mark its letter on your answer sheet**.

Grammar Exercise

6

In 1939, war broke into out up off down
A B C D E

between Britain and Germany.

7

We will waits waited be waiting have waited waiting
A B C D E

for you in front of the school gates tomorrow.

8

I know you are upset but there is no
 must needs point chance need to be rude.
A B C D E

9

I will start my new school on in at for until
A B C D E

the 26th of August this year.

10

However Despite For Even though If
A B C D E

he is a millionaire, he still lives in his old house.

In this exercise there are some **spelling** mistakes. On each numbered line there is either **one** mistake or **no** mistake. Find the group of words with the mistake in it and **mark its letter on your answer sheet**. If there is no mistake, mark **N**.

Spelling Exercise

11 Travelling
First they are traveling to France, then they will visit Spain and Portugal.
A B C D

12 Competition
He didn't expect to win the competition but he decided to enter anyway.
A B C D

13 I don't think I want to be famous because I wouldn't like all the attention.
A B C D N

14 Favourite
Mum says she loves us all equally but I know that I am her favorite.
A B C D

15 Command
In this task you need to identify whether the sentence is a statement, or a comand.
A B C D

Read the **whole** passage carefully, then answer the questions that follow.

Extract from Heidi by Johanna Spyri

1. The room contained a table and chair; in one corner was Grandfather's bed and in another a big pot hung over the stove. On the far side was a large door in the wall that
2. Grandfather opened to reveal a cupboard in it hung his clothes, with a few shirts, socks
3. and handkerchiefs on one shelf; some plates, cups and glasses on another; and on the top
4. shelf a round loaf, smoked meat and cheese. The cupboard held all the Alp Uncle's
5. possessions, everything he needed to subsist. As soon as he opened it, Heidi ran forward
6. and thrust in her things as far as she could, right to the back behind Grandfather's
7. clothing, so that they could not easily be retrieved. Then she looked around the room with
8. close attention and asked, "Where am I going to sleep, Grandfather?"
9. "Wherever you like," he replied.
10. That suited Heidi perfectly. She rushed all over the room looking into every nook to find
11. the best place to sleep. In the same corner as Grandfather's bed was a small ladder
12. propped against the wall, and Heidi climbed up and went into the hayloft. There she
13. found a pile of fresh, sweet-smelling hay and a round skylight with a view right down
14. into the valley.
15. "This is where I'll sleep," Heidi called down. "It's lovely here, Grandfather! Come and
16. see!"
17. "I know," came the voice from below.
18. "I'm just making the bed," the girl shouted as she bustled to and fro, "but please come up
19. and bring me a sheet, because a bed needs a sheet before you can lie on it."
20. "Is that so?" said Grandfather, and presently he went to the cupboard and rummaged
21. inside. From under his shirts he drew out a large cloth of coarse linen that could serve as
22. a sheet, and he took it up to the loft. There he found that Heidi had contrived a neat little
23. bed. At one end, where her head would rest, the hay was packed higher, and in such a
24. way that her face would look directly towards the glassless skylight.
25. "You've made a fine job of this," said Grandfather, "and now for the sheet. But wait..."
26. And he took a few more armfuls of hay from the pile and made the bed twice as deep, so
27. that she would not feel the hard floor beneath it.
28. "Now bring it here." Heidi quickly went to pick up the sheet, but it was so heavy she
29. could scarcely carry it. This was no bad thing, though, as it meant the material was too
30. thick for the sharp blades of hay to prick her through it. Together they spread the sheet
31. over the bed, and where it hung over the sides and ends Heidi briskly tucked it under the
32. hay. It now looked clean and tidy. Heidi stood and pondered their handiwork for a
- 33.

34. second, then said, "We've forgotten something, Grandfather."
35. "What's that?" he asked.
36. "A cover. When you go to bed, you crawl between the sheet and the cover."
37. "Really? What if I haven't got one?"
38. "Oh, it doesn't matter, Grandfather," Heidi reassured him. "In that case I'll just use hay
39. as a cover." Quickly she turned back to the pile of hay, but the old man stopped her.
40. "Wait a minute," he said, and he went down the ladder and over to his bed. He returned
41. with a large, heavy linen sack, which he laid on the ground.
42. "This is better than hay, isn't it?"
43. Heidi picked and pulled at the sack with all her might, trying to unfold it, but its weight
44. was too much for her small hands. Grandfather helped her, and once it was spread over
45. the sheet the bed looked very good and well put together. Heidi stood marvelling at it and
46. said, "That's a wonderful cover, and the bed is perfect now! I wish it was night already so
47. I could lie in it."

Please answer these questions. (Look at the passage again if you need to.) You should choose the **best** answer and mark its letter on your answer sheet.

16

What does this passage start with?

- A a question
- B a description
- C direct speech
- D narration
- E a flashback

17

Look at lines 1 – 6. What does this suggest about Heidi's grandfather?

- A He likes meat and cheese.
- B He is neat and tidy.
- C He is good at baking.
- D He lives a lonely life.
- E He lives a simple life.

18

Look at lines 6 – 8.

What does this suggest about how Heidi feels about her things?

- A She doesn't care much about her things.
- B She embarrassed about her things.
- C She cares about her things.
- D She thinks her things are ugly.
- E She is worried her things will be stolen.

19

Why does Heidi choose to make her bed in the hayloft?

- A It is far away from her grandfather.
- B It is the warmest part of the room.
- C It is the largest part of the room.
- D It has the best views of valley.
- E It is the coolest part of the room.

20

Look at lines 22 -25. Why has Heidi made the bed in this way?

- A So that she can see out of the window.
- B So that she will be more comfortable.
- C So that she will be warmer.
- D To make it look neater.
- E Because she loves the smell of hay.

21

“it was so heavy she could scarcely carry it” (line 29 – 30)

Why is it a good thing that the sheet is heavy?

- A It will keep Heidi warm.
- B It looks clean and tidy.
- C It stops the hay from poking through.
- D It means that Heidi won't need a cover.
- E It won't move about.

22

“I wish it was night already” (line 46)

Why does Heidi wish this?

- A She is tired from her long journey.
- B She is frightened of her grandfather.
- C She is excited to try her new bed.
- D She wants to get up early in the morning.
- E She is bored and has nothing to do.

For these questions you have to **write your answers**, neatly, in the boxes provided on your answer sheet.

23

How many different items of furniture are mentioned in the passage?

④ → Table, chair, bed, cupboard

24

What does Heidi use as a cover for her bed?

Linen sack

25

Which word in line 6 means the same as “belongings”?

possessions

26

Which word in line 27 means the same as “two times”?

twice

27

Which part of speech is “cover” as it appears in the passage? (line 39)

Noun

28

Which one part of speech are the following as they appear in the passage?

it (line 3) he (line 6) she (line 8) you (line 10)

Pronouns

Maths – Main Test

29

If $X = 5$ and $Z = 2$

$$5^2 - 2^3 =$$

$$\cancel{5^2} - \cancel{2^3} = \underline{\hspace{2cm}}$$

$$5^2 - 2^3 =$$

$$\begin{array}{r} 5 \times 5 \quad - \quad 2 \times 2 \times 2 \\ 25 \quad - \quad 8 = 17 \end{array}$$

What is the correct number to make the calculation correct?

A 17

B 3

C 4

D 2

E 19

30



In a game Sam is playing against Terry you get 7 points for getting the ball in the basket and you lose 4 points every time you miss. At the end of the game you can have a positive or a negative number of points. At the end of the game, Terry has got the ball in the basket 4 times but missed 8 times.

How many points does Terry have?

$$4 \times 7 = 28$$

$$4 \times 8 = -32$$

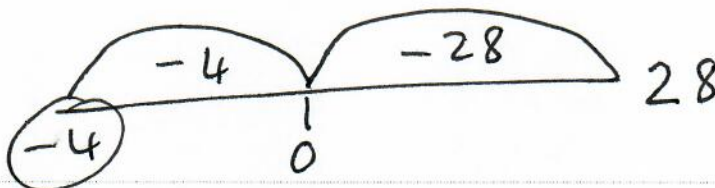
A 4

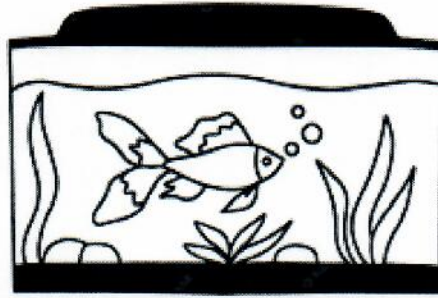
B -8

C 28

D -4

E 50





Grace asks 4 friends how many fish there are in their tanks at home. Their answers are shown in the list below.

2 (1) 3 4

$$\underline{\quad} - 1 = 5 \quad 5 + 1 = (6)$$

Grace then adds to this list the number of fish in her tank at home. There are now 5 numbers in the new list. The range of these 5 numbers is 5.

How many fish are there in Grace's tank at home?

A 1

B 7

C 3

D 5

(E 6)

A packet of cookies contains 15 individual cookies. Every day Barney eats five cookies with his cup of tea.

How many packets of cookies does Barney eat in 18 days?

A 5

(B 6)

C 90

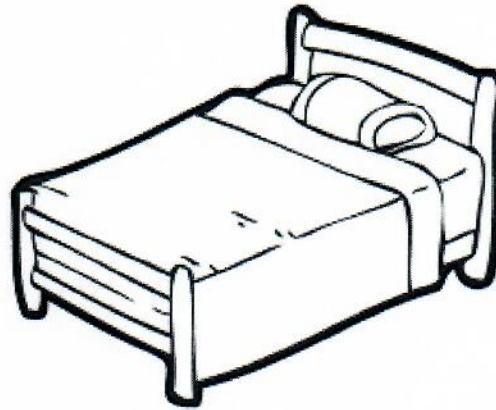
D 15

E 18

$$\begin{array}{r} 418 \\ \times 5 \\ \hline 90 \end{array}$$

(6)

$$\begin{array}{r} \div 15 \rightarrow 3 \\ \rightarrow 5 \quad | \quad 18 \\ \hline 90 \end{array}$$



$$4 \times 5 = 20$$

$$3 \times 2 = 6$$

$$\frac{6}{20} = \frac{3}{10} = 30\%$$

A bedroom measures 4m by 5m. Sam buys a king-sized bed for the room which measures 3m by 2m.

What percentage of the bedroom floor is taken up by the bed?

A 25%

B 20%

C 30%

D 50%

E 40%

Look at the equation below.

$$p - 26.3 = 91$$

$$\begin{array}{r} 91.0 \\ + 26.3 \\ \hline 117.3 \end{array}$$

What is the value of p?

A 65

B 112.3

C 117.3

D 73.9

E 64.7

A bath holds 80 litres of water when half full.

The tap lets out 20 litres of water every minute.

$$\begin{array}{r} \times 2 \\ 80 \\ \hline 160 \end{array}$$

$$24 \overline{) 160} \begin{array}{l} 8 \text{ mins} \\ \underline{160} \\ 0 \end{array}$$

$$\begin{array}{r} 60 \\ \times 8 \\ \hline 480 \end{array}$$

How long, in seconds, does it take to fill the bath completely with water?

A 8

B 480

C 120

D 240

E 4

36

What is the product of all the factors of 6?



- A 36 B 12 C 18 D 6 E 24

$$1 \times 2 \times 3 \times 6 = 36$$

37



$$\begin{array}{r} 29 \\ 33 \\ + 31 \\ \hline 93 \end{array}$$

1hr 33mins

Jen is watching her favourite box set on TV. She decides to watch three episodes without any breaks before bed. The first episode lasts 29 minutes, the second lasts 33 minutes and the third lasts 31 minutes. She begins watching the first episode at 7:15 pm.

19:15

At what time does the third episode finish in 24 hour clock?

- A 8:48pm B 17:42 C 20:31 D 20:48 E 5:42pm

$$\begin{array}{r} 19:15 \\ + 01:33 \\ \hline 20:48 \end{array}$$

38

What is 120 minutes increased by 15% in hours and minutes?

- A 2hr 24m B 1hr 35m C 2hr 15m D 1hr 45m E 2hr 18m

$$\frac{\times 15}{\div 100} \text{ of } 120 =$$

$$\begin{array}{r} 1.2 \\ \times 15 \\ \hline 60 \\ 120 \\ \hline 18.0 \end{array}$$

$$\begin{array}{r} 120 \\ + 18 \\ \hline 138 \text{ mins} \\ - 120 = 2 \text{ hrs} \\ \hline 018 \end{array}$$

60=1
120=2✓
180=3x

In a survey, Toby asks 32 people how many brothers and sisters they have. The results are shown in the table below.

Number of brothers and sisters	Number of people
0	4
1	8
2	16
3	0
4	2
5	2

Toby picks a person from his survey at random. Look at the four events A, B, C, D and E below.

- A: He picks a person with a total of 2 brothers and sisters. $\frac{16}{32}$
- B: He picks a person with one brother or sister. $\frac{8}{32}$
- C: He picks a person with less than 2 brothers and sisters. $\frac{12}{32}$
- D: He picks a person with more than 2 brothers and sisters. $\frac{4}{32}$
- ✓ E: He picks a person with less than 3 brothers and sisters. $\frac{28}{32}$
- $16 + 8 + 4 = 28$

Which outcome above is the most likely?

A A

B B

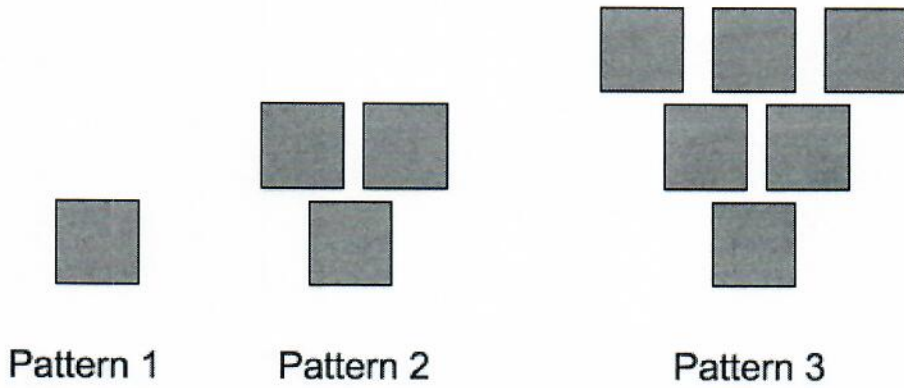
C C

D D

E E

40

Patterns are formed from square tiles. The first three patterns in a sequence are shown below.



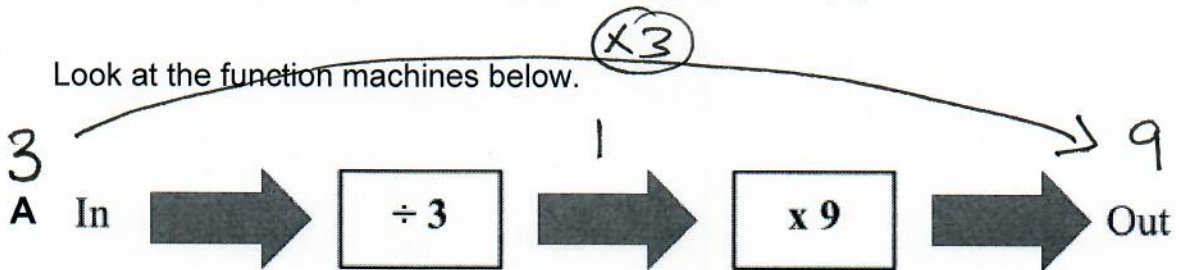
How many tiles are needed to make the eighth pattern?

- A 21 **B 36** C 45 D 48 E 28

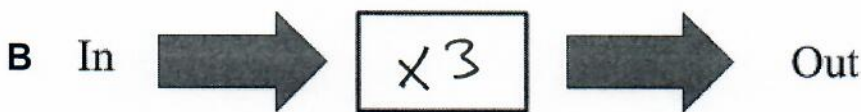
1	2	3	4	5	6	7	8
1	3	6	10	15	21	28	36
	+2	+3	+4	+5	+6	+7	+8

41

Look at the function machines below.



The function machine B must still give the same inputs and outputs as function machine A.



What one function could be used in function machine B to give the same inputs and outputs as function A?

- A x 3** B $\div 9$ C $\div 3$ D $\times 27$ E $\times 6$

42

Look at the bus timetable below.

Destination	Journey A
Newcastle	10:17
Durham	10:43
Leeds	11:27
Manchester	12:14
London	_____

$$\begin{array}{r}
 10:17 \\
 + 3:47 \\
 \hline
 13:64 \\
 \leftarrow 60 \\
 \hline
 14:04 \\
 - 12 \\
 \hline
 2:04pm
 \end{array}$$

Journey A from Newcastle to London takes 3 hours 47 minutes.

What is the missing time in the above timetable showing the arrival time in London in 12-hour clock?

- A 13:58 B 1:54pm **C 2:04pm** D 1:58pm E 6:35am

43

Ruth is preparing for a race. Her training program requires that she must run 3 miles more than the day before. On her 4th day of training she ran 15 miles.

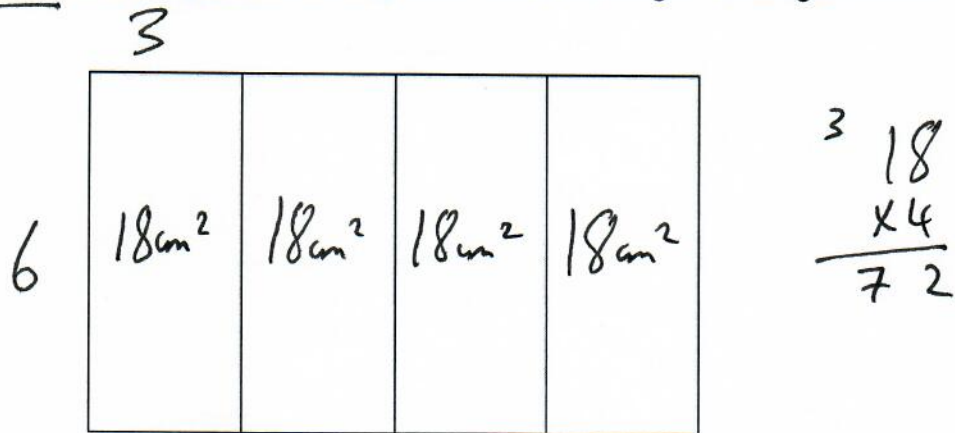
How many miles did she run on her first day of training?

- A 18 B 7 C 9 D 21 **E 6**

$$\begin{array}{r}
 \textcircled{1} \quad 2 \quad | \quad 3 \quad | \quad 4 \\
 \hline
 6 \quad 9 \quad | \quad 12 \quad | \quad 15 \\
 \leftarrow -3 \quad \leftarrow -3 \quad \leftarrow -3
 \end{array}$$

44

Four identical rectangles are arranged to make the larger rectangle below.



One of the smaller rectangles has a side length of 6cm by 3cm.

What is the area of the larger rectangle?

- A 90cm^2
- B 18cm^2
- C 48cm^2
- D 72cm^2**
- E 66cm^2

45



$1 = 360^\circ$

$\begin{array}{r} 2 \ 360 \\ \times 4 \\ \hline 1440 \end{array}$

A snowboarder completes four full turns in a competition jump.

How many degrees would this be?

- A 180°
- B 720°
- C 1440°**
- D 360°
- E 440°

46

There are 10 boys and 18 girls in a class at West Jesmond Primary.

$$\frac{18}{28}$$

What fraction of the class are girls?

A $\frac{18}{10}$

B $\frac{10}{28}$

C $\frac{10}{14}$

D $\frac{3}{4}$

E $\frac{18}{28}$

47

Patrick's birthday is on the 25th September and is a Tuesday. His brother's birthday is exactly one month later.

$30 \text{ days} = 4 \text{ weeks} + 2 \text{ days}$

What day does his brothers birthday fall on?

A Monday

B Tuesday

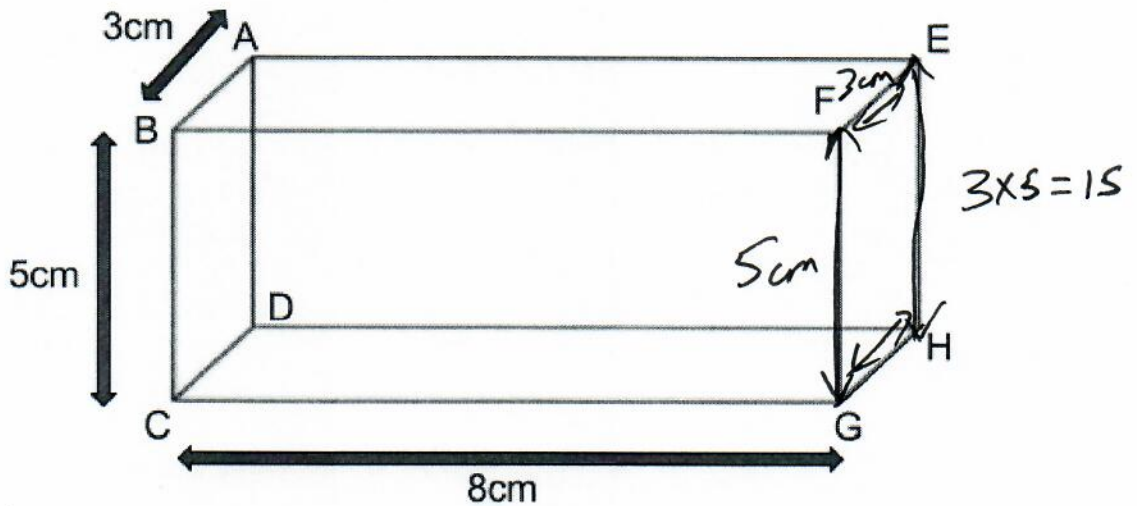
C Wednesday

D Thursday

E Friday

48

Look at the cuboid below. The corners have been labelled A to H.



What is the area of the face with corners E, F, G and H?

A 24cm^2

B 120cm^2

C 15cm^2

D 40cm^2

E 18cm^2

49

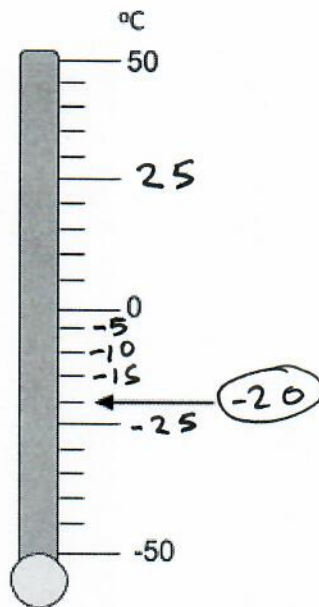
What is the biggest prime number below 70?

- A 65 **B 67** C 73 D 71 E 69

$69 \times (x3)$
 $68 \times (x2)$
 $67 \checkmark$

50

Look at the thermometer in the diagram below.



What is temperature indicated by the arrow?

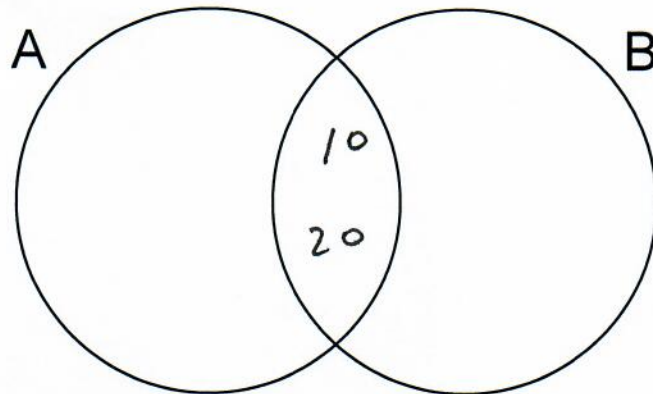
- A -20°C**
B -8°C
C 20°C
D -4°C
E 15°C

For questions 51–56, you have to **write your answers** in the boxes provided on your answer sheet. The units of measurement have been given.

51

Look at the Venn diagram below.

A is the set of whole numbers between 1 and 21 which are divisible by 5. $5, 10, 15, 20$
 B is the set of whole numbers between 1 and 21 which are divisible by 2.



The middle section overlapping between A and B on the Venn diagram contains two numbers.

What are the two numbers?

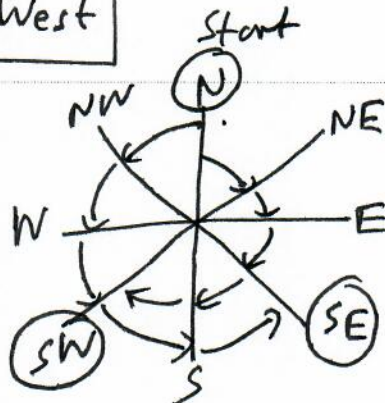
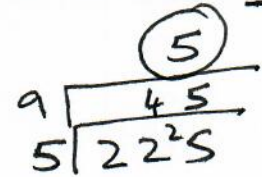
10 and 20

52

Michael is facing North. He turns through an angle of 225° . He could be facing in two different directions.

What are the two directions Michael could be facing?

South East and South West



53



Jen makes three types of cakes in her shop.

Cake A weighs 2.37 kg. $\times 1000 = 2370\text{g}$

Cake B weighs 2189 g. 2189g

Cake C weighs 2.4 kg. $\times 1000 = 2400\text{g}$

Which cake weighs the least?

B

$$1\text{L} = 1000\text{ml}$$

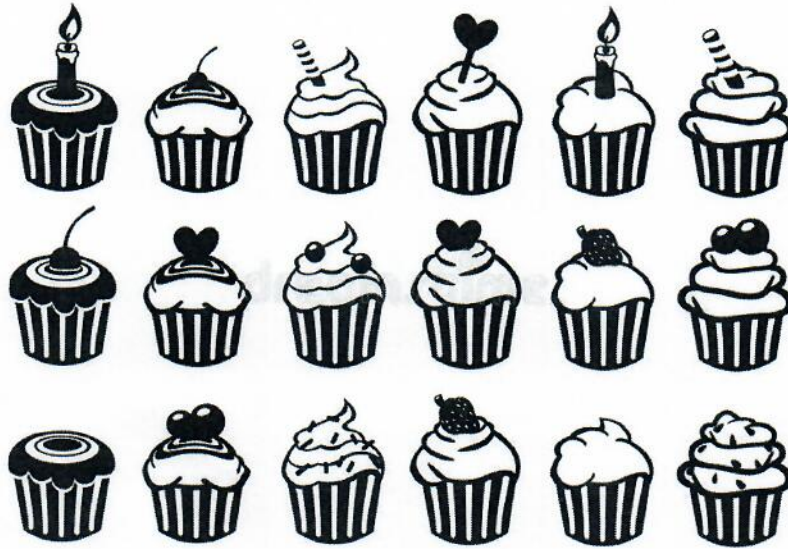
54

How many millilitres are there in 0.09 litres?

90

$$0.09 \times 1000 = 90$$

55



$$\begin{array}{r} \textcircled{5} \\ 6\phi \overline{) 30\phi} \text{ wk1} \\ \textcircled{7} \\ 6\phi \overline{) 42\phi} \text{ wk2} \end{array}$$

Jen makes cupcakes for a living. She works 60 hours a week and makes 300 cupcakes in week 1. She receives a huge order for a wedding of 420 cupcakes. She makes the 420 cupcakes in the 60 hours in week 2.

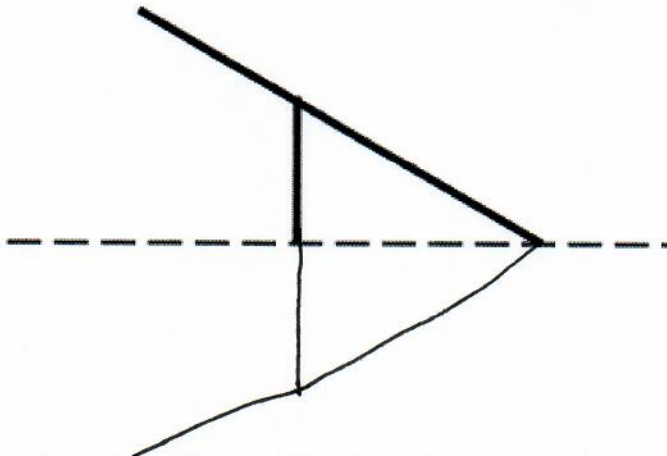
$$7 - 5 = \textcircled{2}$$

What is the difference between the number of cupcakes she makes per hour in week 1 and week 2?

2

56

Look at the figure below. There is a shape and mirror line.



If the shape is reflected in the mirror line what letter from the alphabet will be created?

A